



Grab-Sampling Surface Water

Appendix C - 5

Summary of Nonradiological Monitoring Data

Table C - 5.1
West Valley Demonstration Project
State Pollutant Discharge Elimination System (SPDES) Sampling Program
Effective September 1990

Outfall	Parameter	Limit	Sample Frequency
001 (PROCESS AND STORM WASTEWATER)	Flow	Monitor	2 per discharge
	Aluminum, total	14.0 mg/L	2 per discharge
	Ammonia (NH ₃)	*	2 per discharge
	Arsenic, dissolved	0.15 mg/L	2 per discharge
	BOD-5	**	2 per discharge
	Iron, total	**	2 per discharge
	Zinc, total recoverable	0.48 mg/L	2 per discharge
	Suspended solids	45.0 mg/L	2 per discharge
	Cyanide amenable to chlorination	0.022 mg/L	2 per discharge
	Settleable solids	0.3 mL/L	2 per discharge
	pH (range)	6.0-9.0	2 per discharge
	Oil and grease	15.0 mg/L	2 per discharge
	Sulfate	Monitor	2 per discharge
	Nitrate	Monitor	2 per discharge
	Nitrite	Monitor	2 per discharge
	Chromium (hexavalent), total rec.	Monitor	2 per discharge
	Cadmium, total recoverable	0.007mg/L	2 per discharge
	Copper, total recoverable	0.03 mg/L	2 per discharge
	Lead, total recoverable	0.15 mg/L	2 per discharge
	Nickel, total	2.7 mg/L	2 per discharge
	Dichlorodifluoromethane	0.01 mg/L	2 per discharge
	Trichlorofluoromethane	0.01 mg/L	2 per discharge
	3,3-dichlorobenzidine	0.01 mg/L	2 per discharge
	Tributyl phosphate	32 mg/L	2 per discharge
	Vanadium	0.19 mg/L	2 per discharge
	Chromium, total	0.050 mg/L	annual
	Selenium, total	0.040 mg/L	annual
	Barium	0.5 mg/L	annual
	Antimony	1.0 mg/L	annual
	Chloroform	0.3 mg/L	annual
	Bis (2-ethylhexyl) phthalate	1.6 mg/L	semi-annual
	4-dodecene	0.6 mg/L	semi-annual
007 (SANITARY AND UTILITY WASTEWATER)	Flow	Monitor	3 per month
	Ammonia	*	3 per month
	BOD-5	**	3 per month
	Iron, total	**	3 per month
	Suspended solids	45.0 mg/L	2 per month
	Settleable solids	0.3 mL/L	weekly
	pH (range)	6.0-9.0	weekly
	Chloroform	0.020 mg/L	annual
008 (FRENCH DRAIN WASTEWATER)	Flow	Monitor	3 per month
	BOD-5	**	3 per month
	Iron, total	**	3 per month
	pH (range)	6.0-9.0.	weekly
	Silver, total	0.008 mg/L	annual
	Zinc, total	0.100 mg/L	annual

* Reported as flow-weighted average of outfalls 001 and 007. Limit is 2.1 mg/L.

**Reported as flow-weighted average of outfalls 001, 007, and 008. Limits are 5.0 mg/L for BOD-5 and 0.31mg/L for FE. Iron data are net limits reported after background concentrations are subtracted.

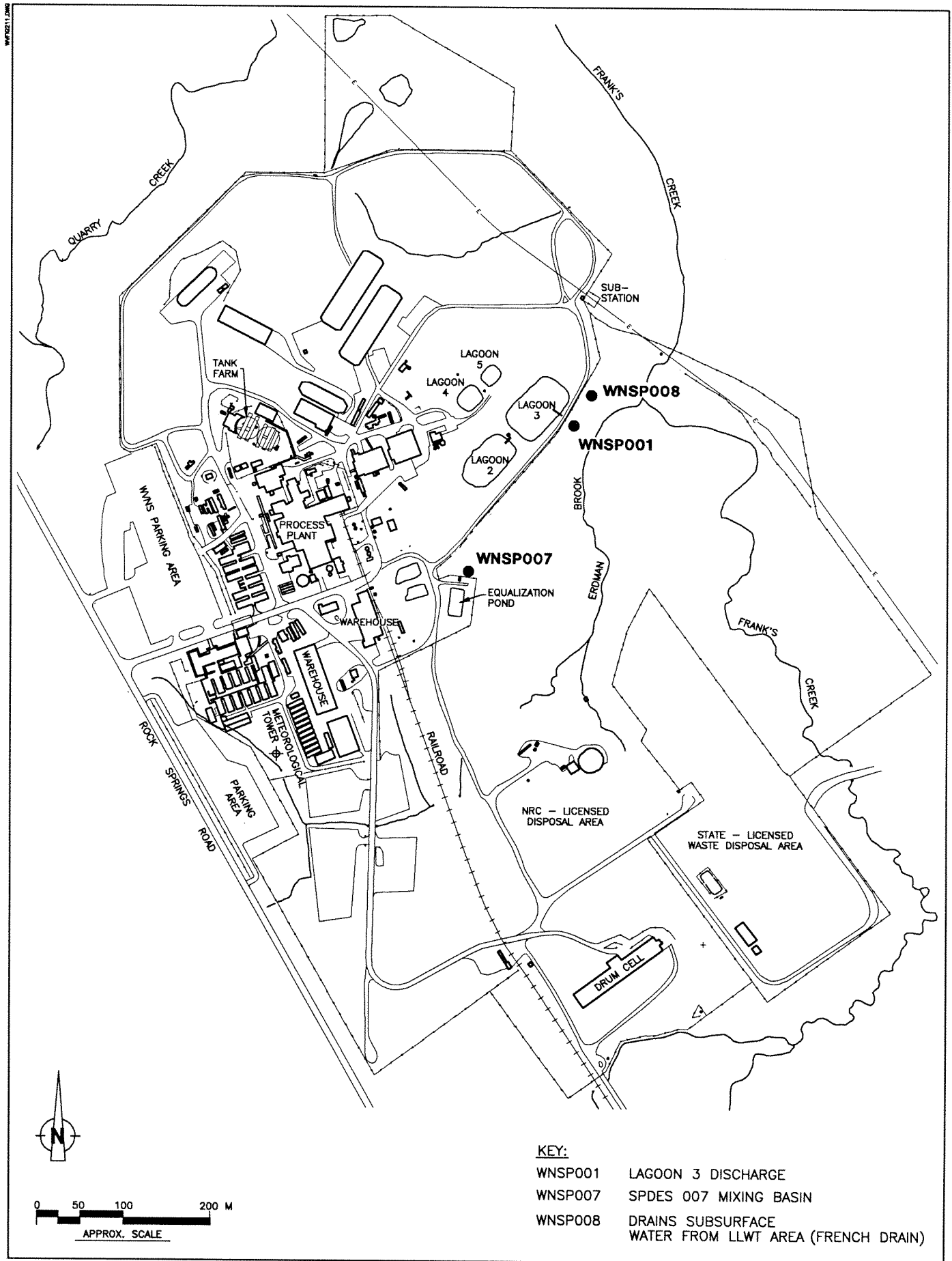


Figure C-5.1. SPDES Monitoring Points.

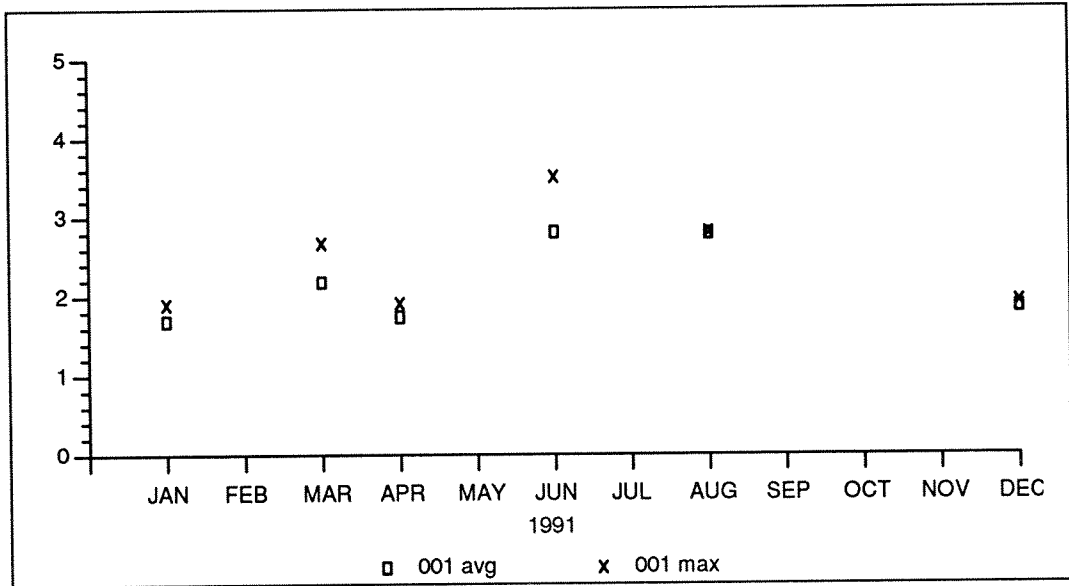


Figure C - 5.2

BIOCHEMICAL
OXYGEN
DEMAND-5
(mg/L)

Outfall 001

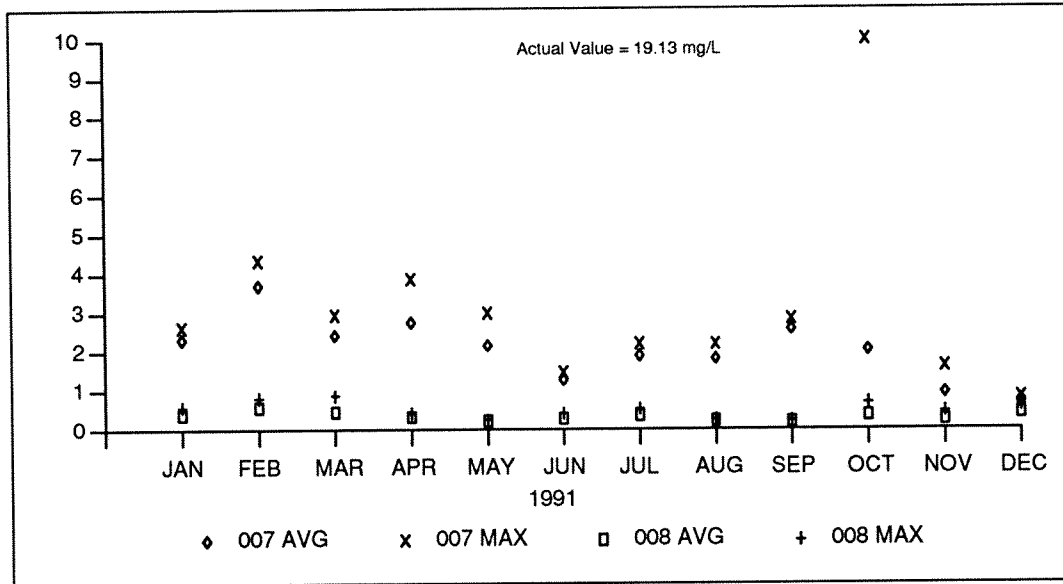


Figure C - 5.3

BIOCHEMICAL
OXYGEN
DEMAND-5
(mg/L)

**Outfalls 007
and 008**

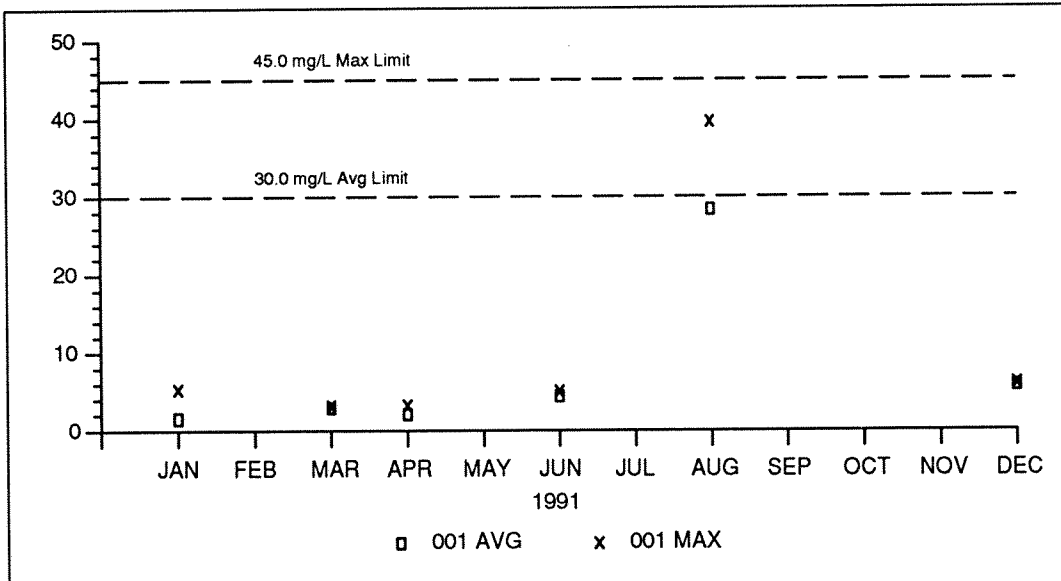


Figure C - 5.4

SUSPENDED
SOLIDS
(mg/L)

Outfall 001

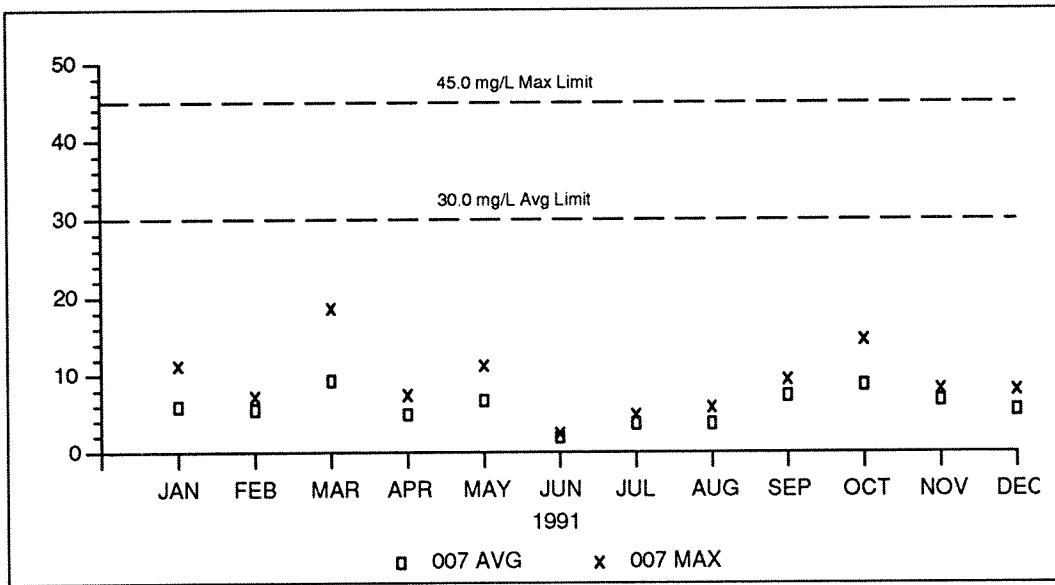


Figure C - 5.5

SUSPENDED
SOLIDS
(mg/L)

Outfall 007

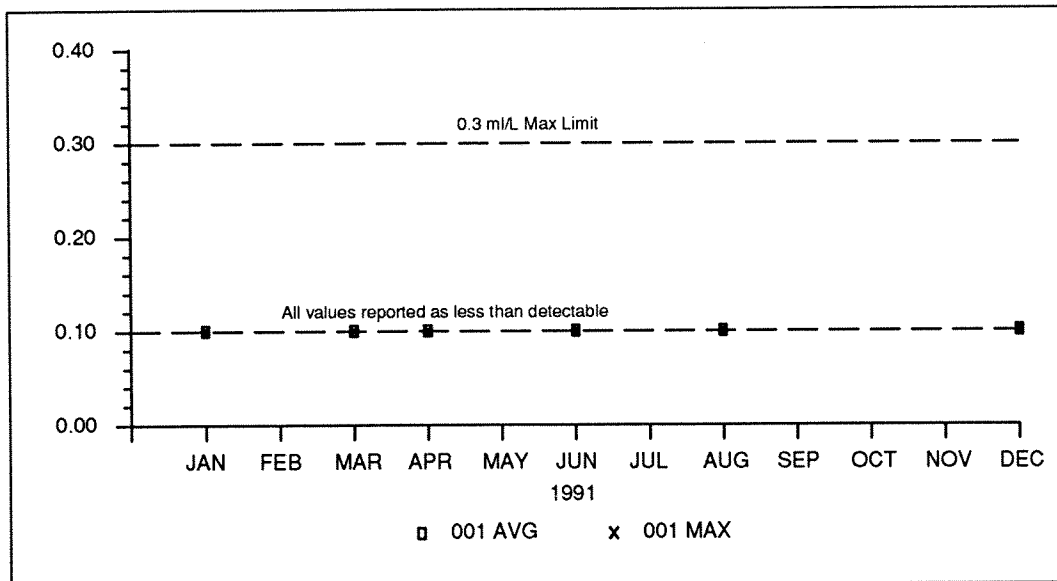


Figure C - 5.6

SETTLEABLE
SOLIDS
(ml/L)

Outfall 001

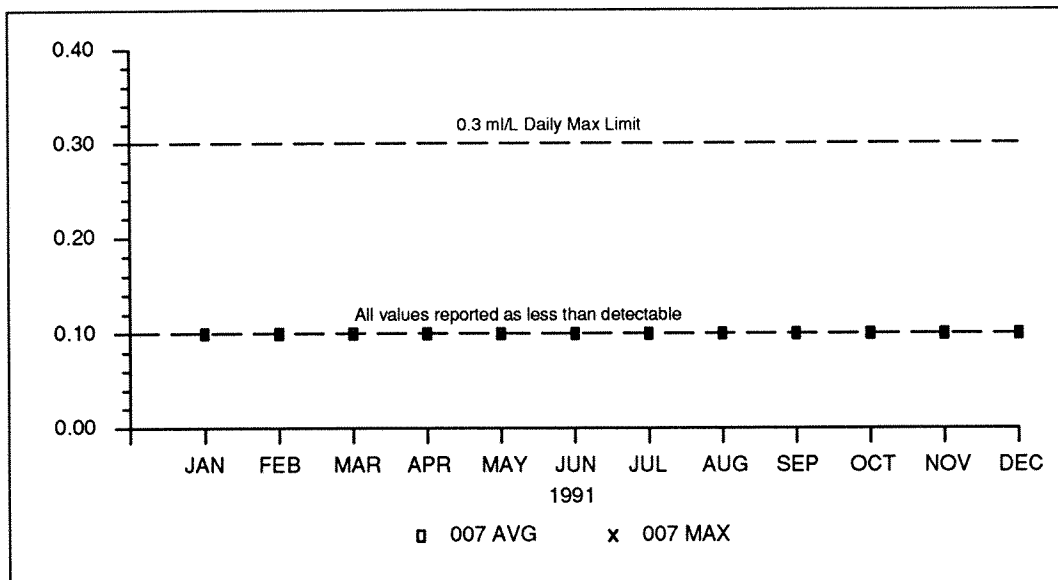


Figure C - 5.7

SETTLEABLE
SOLIDS
(ml/L)

Outfall 007

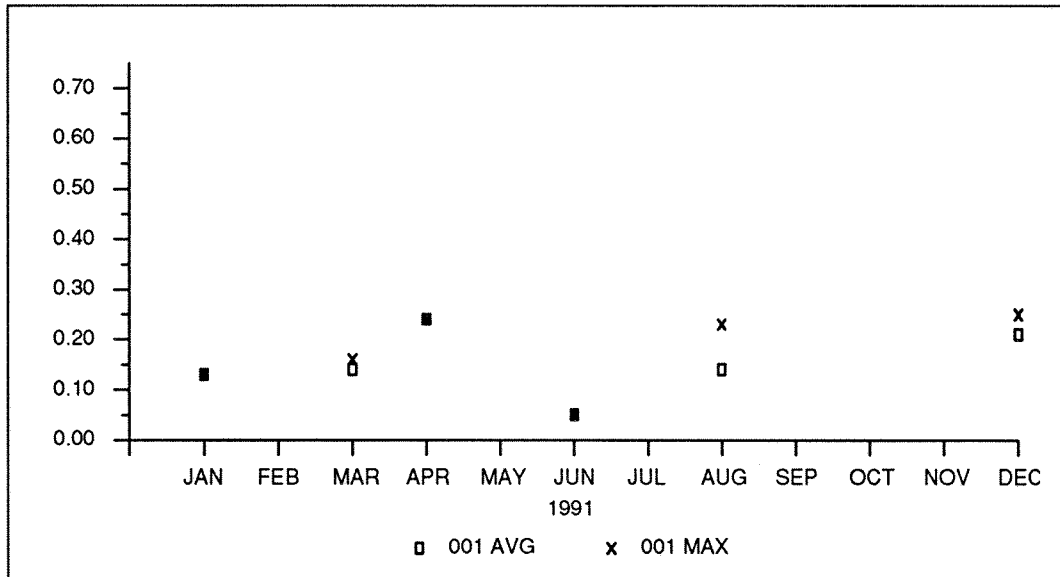


Figure C - 5.8

AMMONIA
(mg/L)

Outfall 001

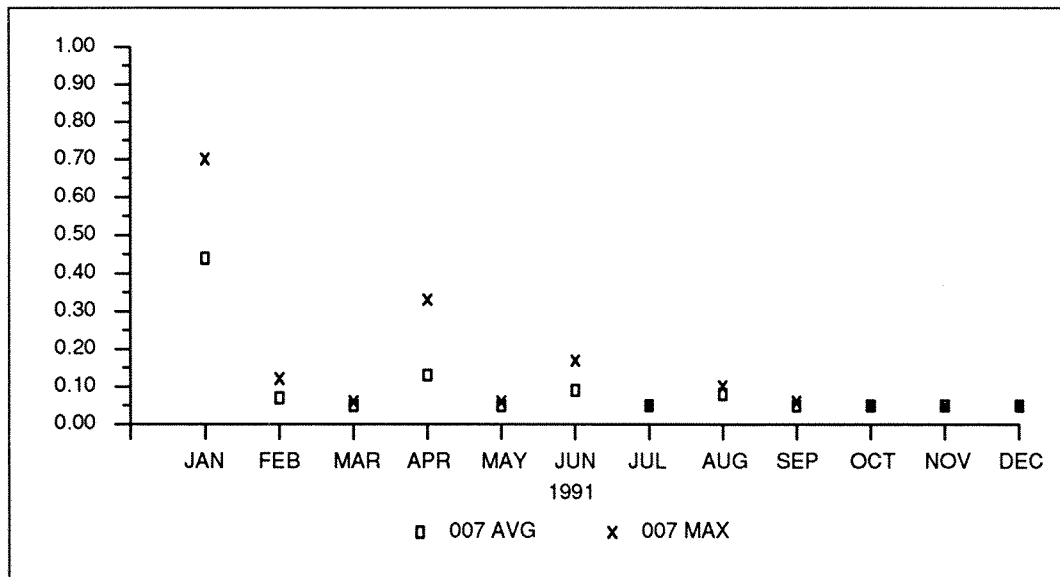


Figure C - 5.9

AMMONIA
(mg/L)

Outfall 007

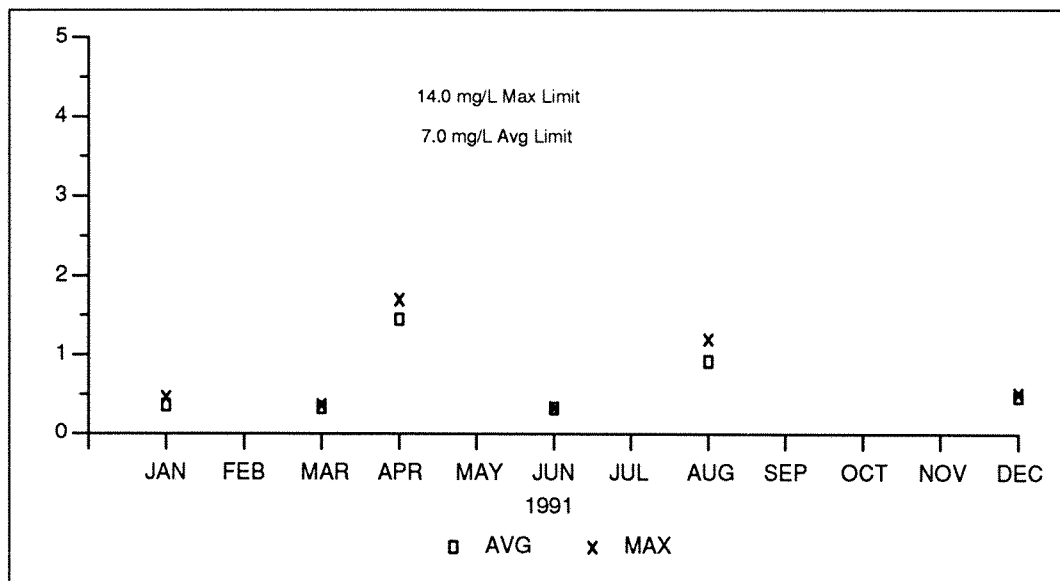


Figure C - 5.10

METALS
(ALUMINUM)
(mg/L)

Outfall 001

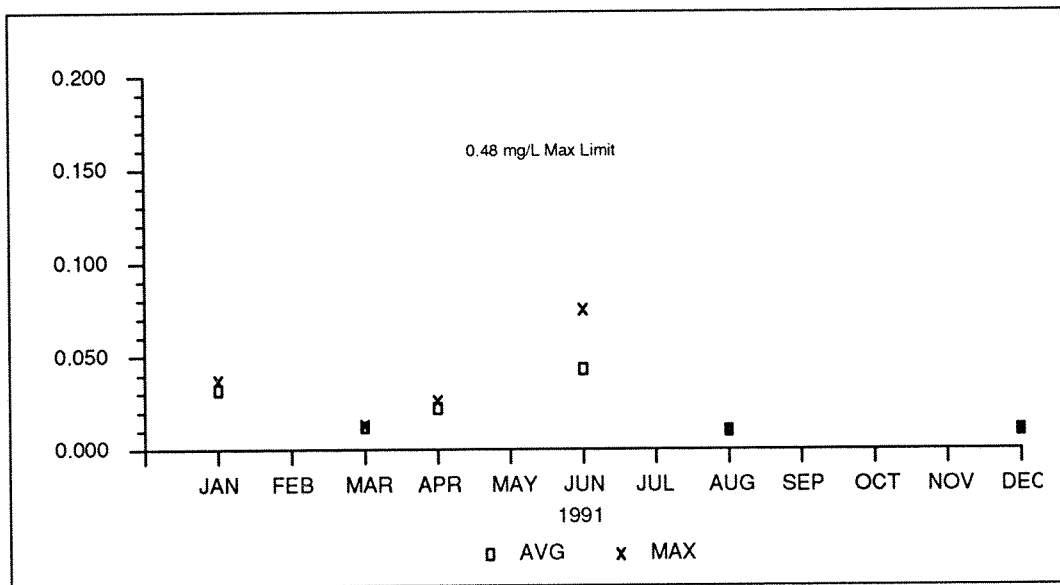


Figure C - 5.11

METALS (ZINC)
(mg/L)

Outfall 001

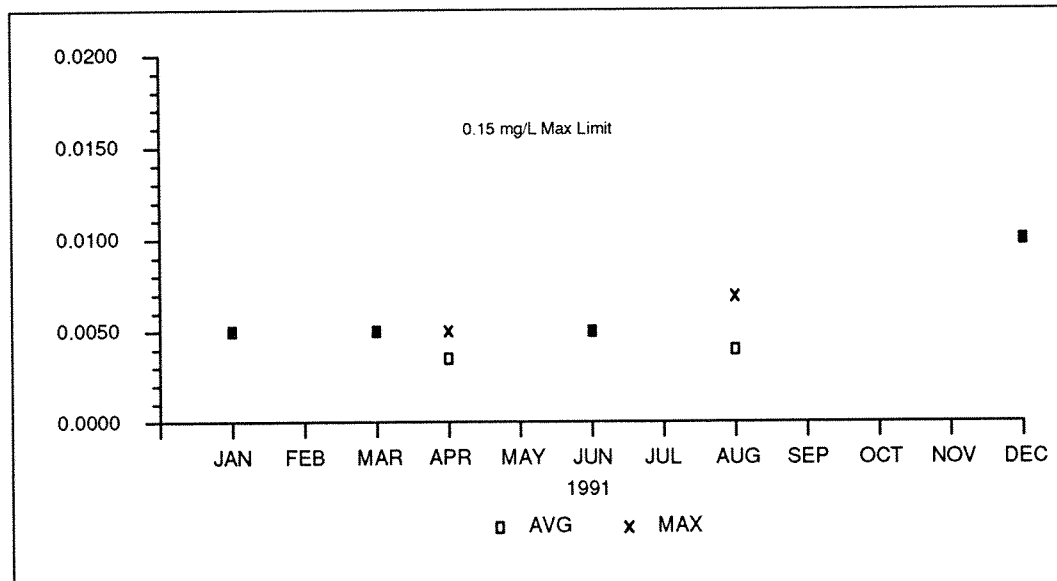


Figure C - 5.12

METALS (ARSENIC)
(mg/L)

Outfall 001

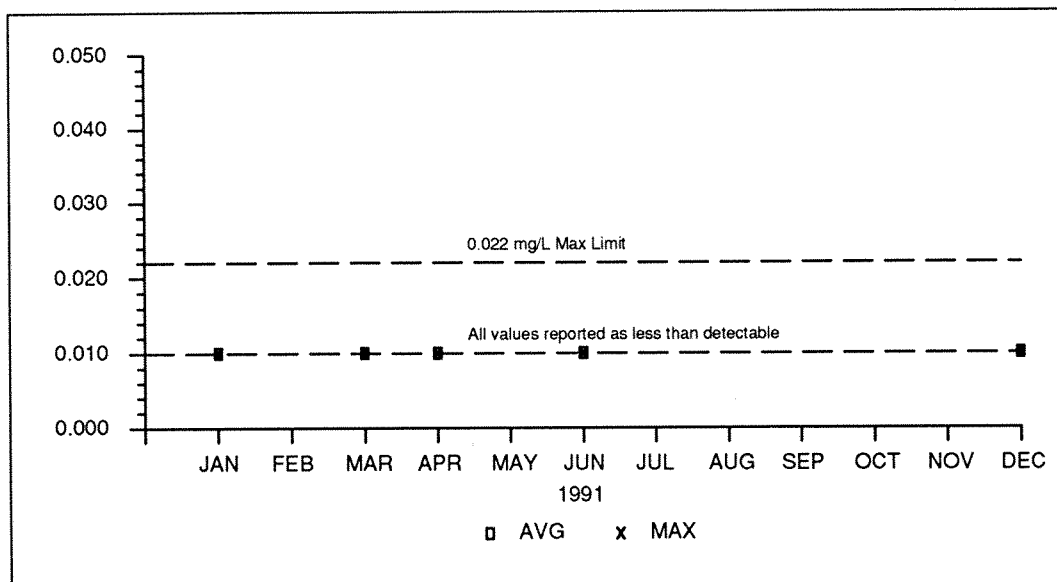


Figure C - 5.13

CYANIDE
(mg/L)

Outfall 001

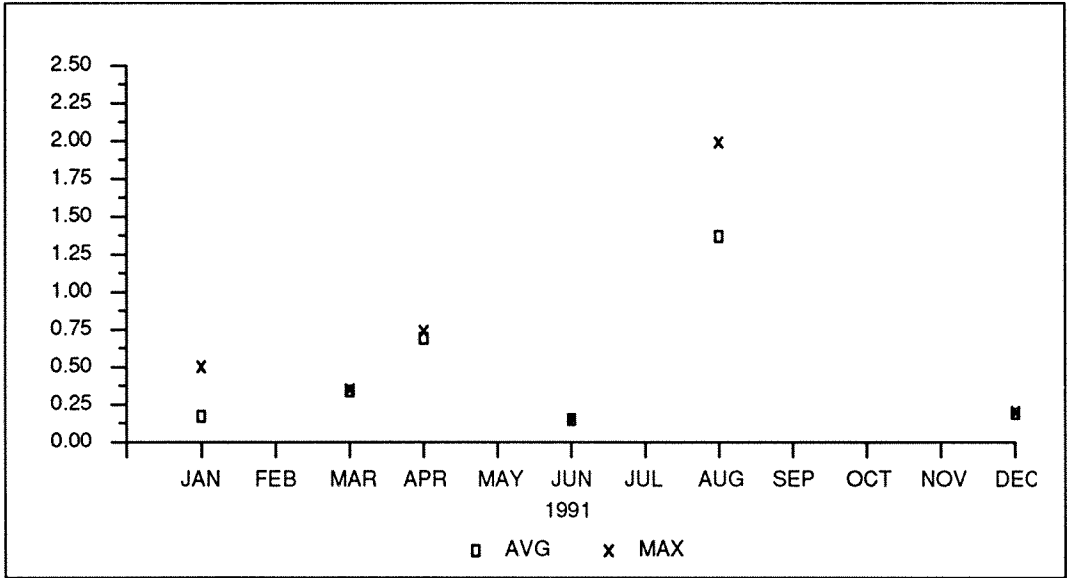


Figure C - 5.14

METALS (IRON)
(mg/L)

Outfall 001

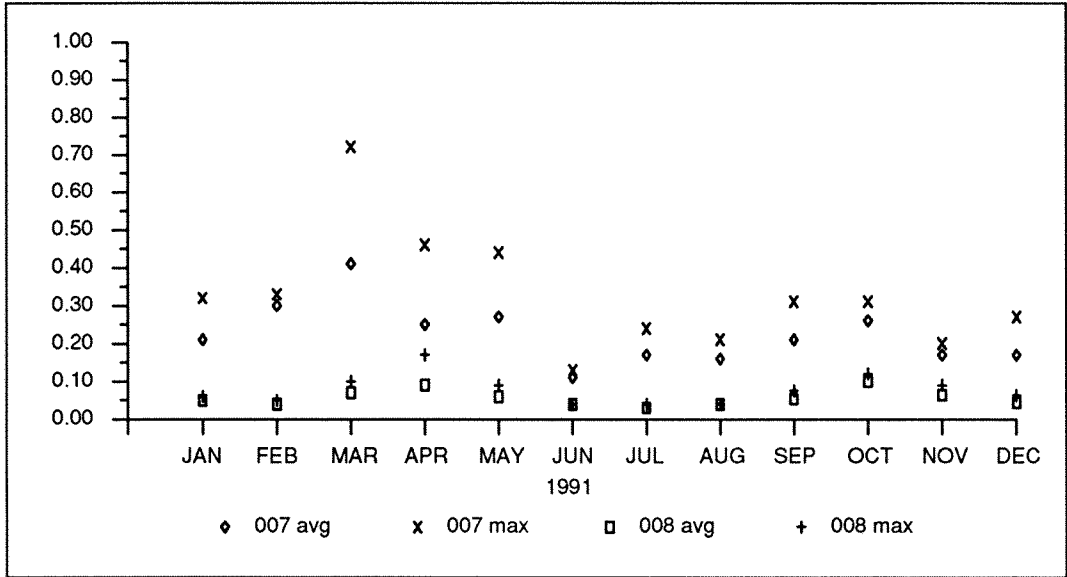


Figure C - 5.15

METALS (IRON)
(mg/L)

Outfalls 007
and 008

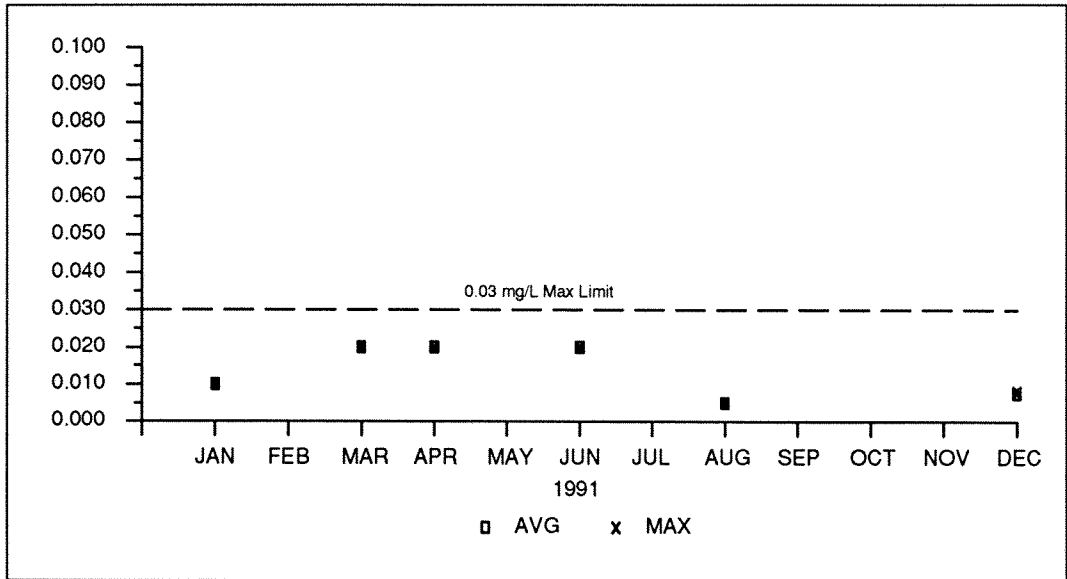


Figure C - 5.16

METALS (COPPER)
(mg/L)

Outfall 001

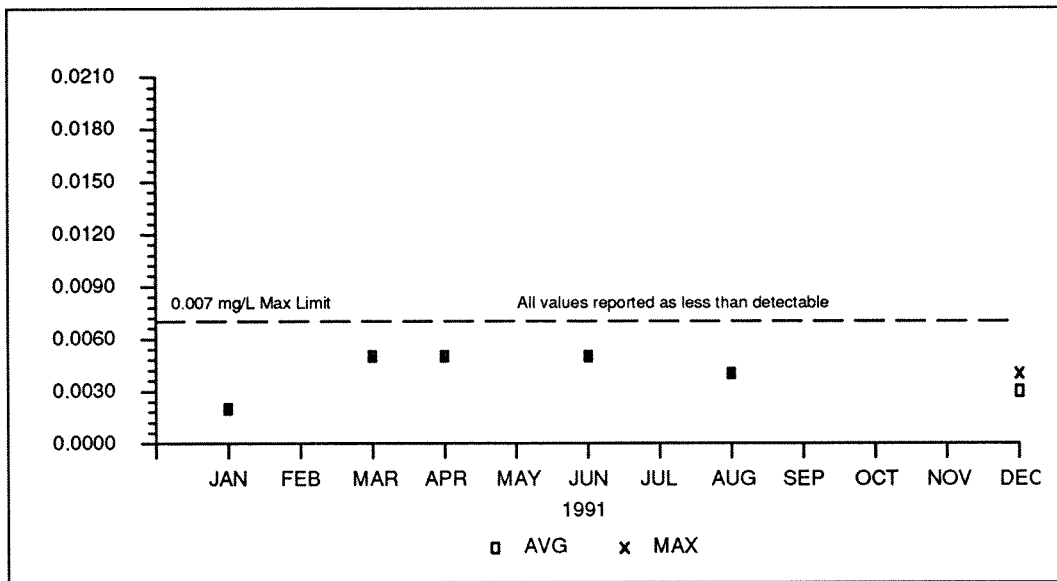


Figure C - 5.17

METALS (CADMIUM)
(mg/L)

Outfall 001

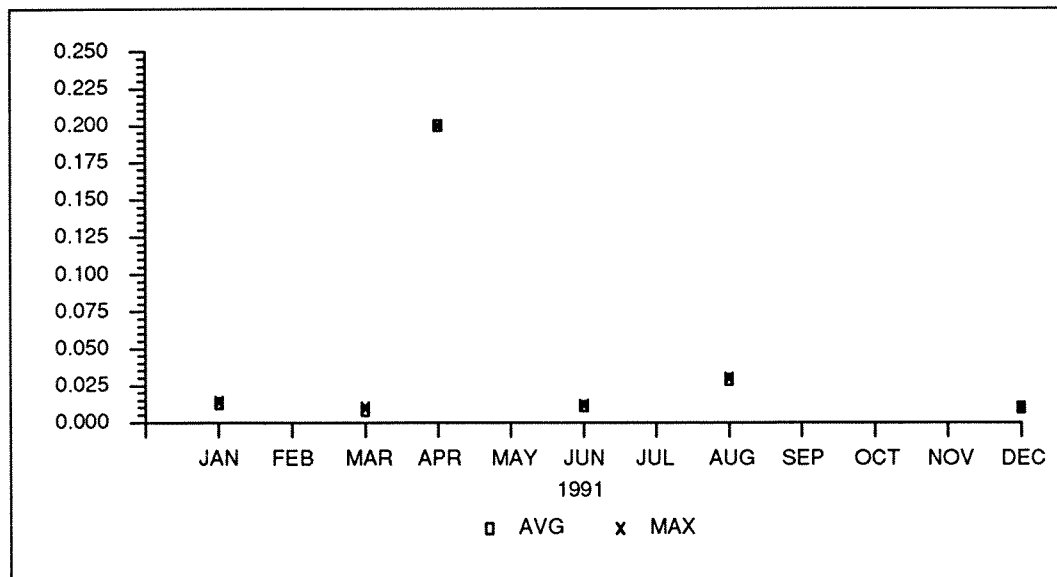


Figure C - 5.18

METALS (CHROMIUM,VI)
(mg/L)

Outfall 001

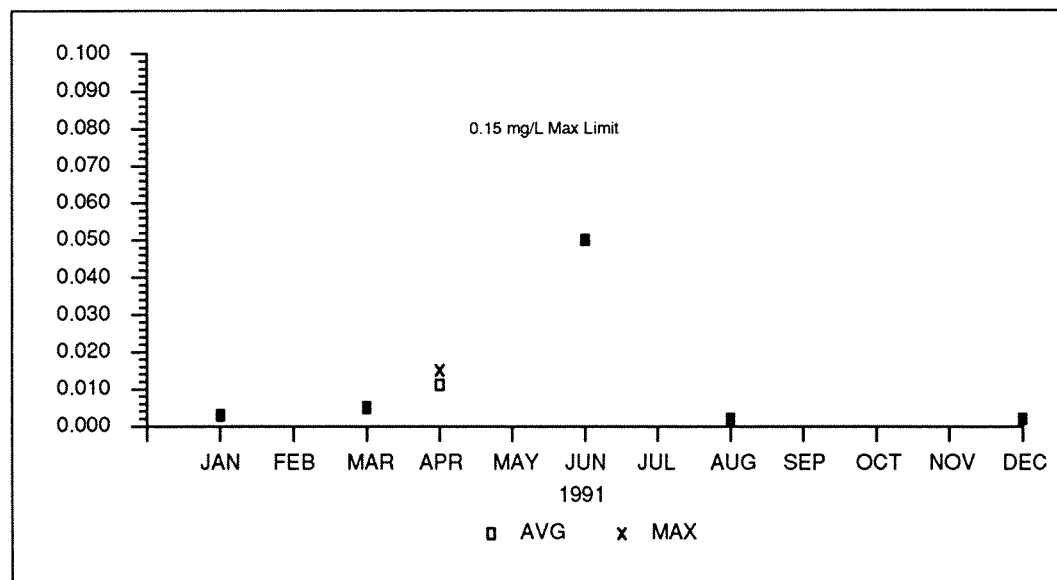
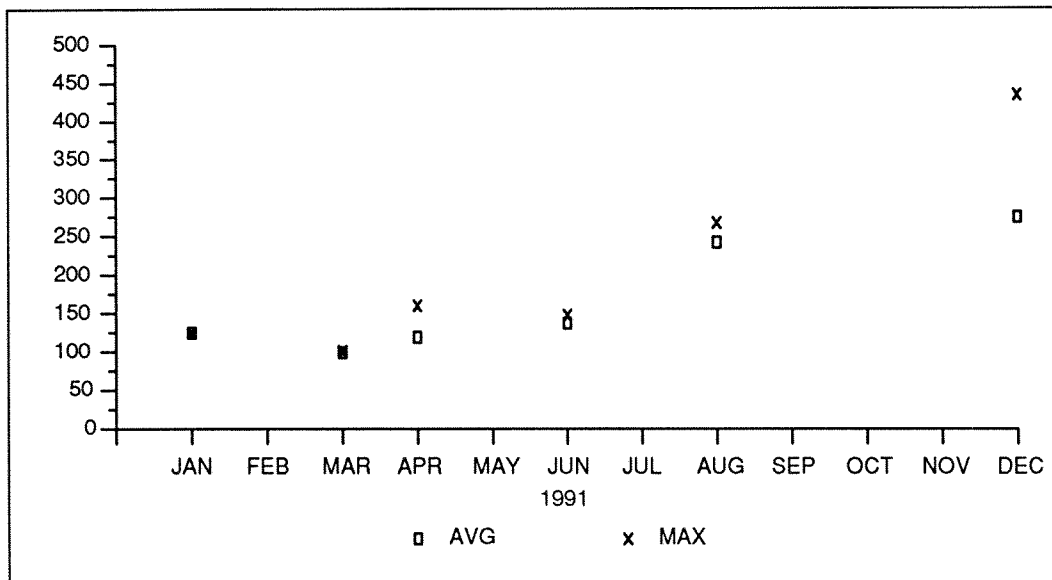
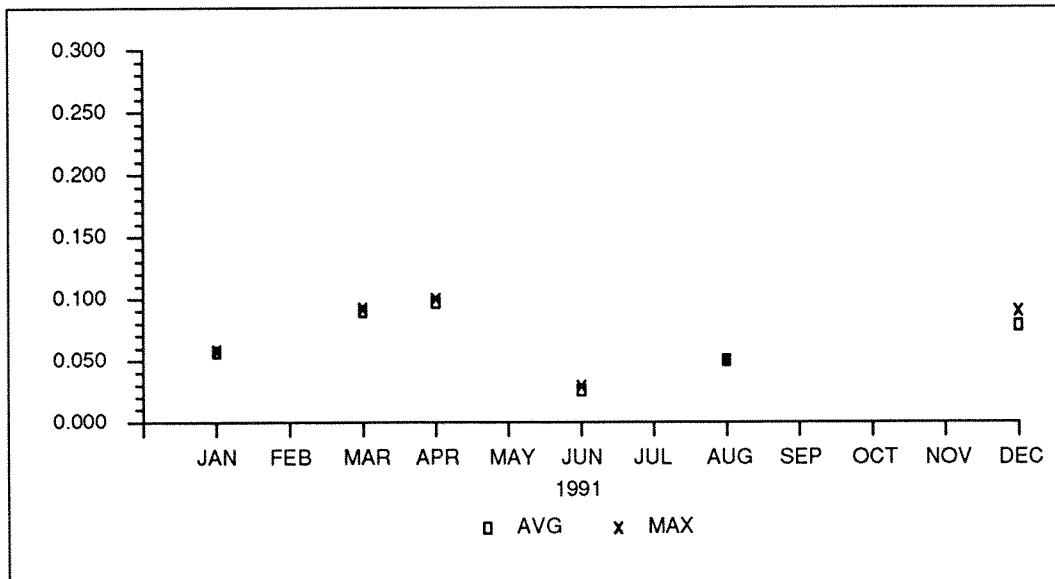
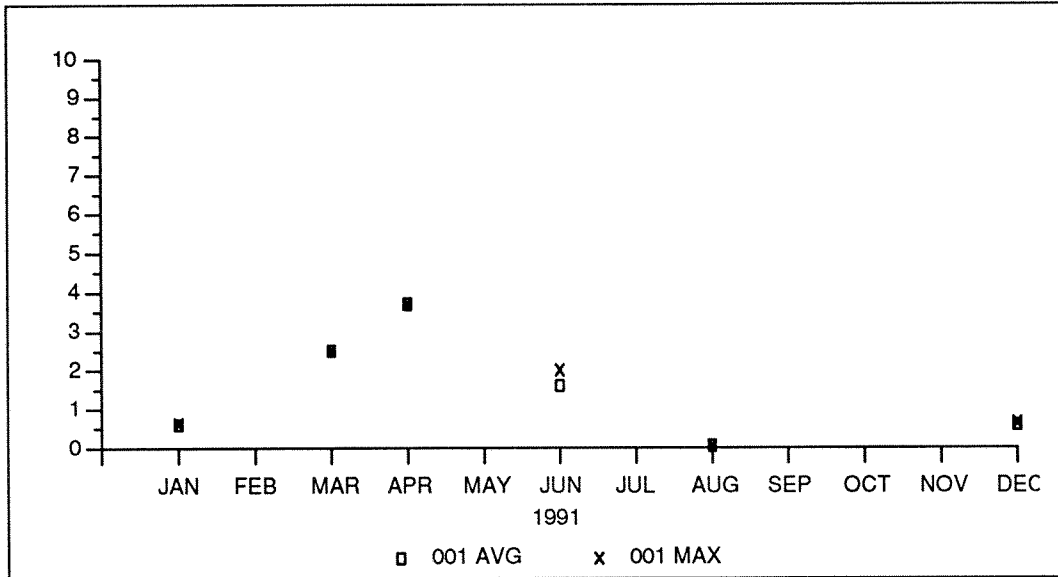


Figure C - 5.19.

METALS (LEAD)
(mg/L)

Outfall 001



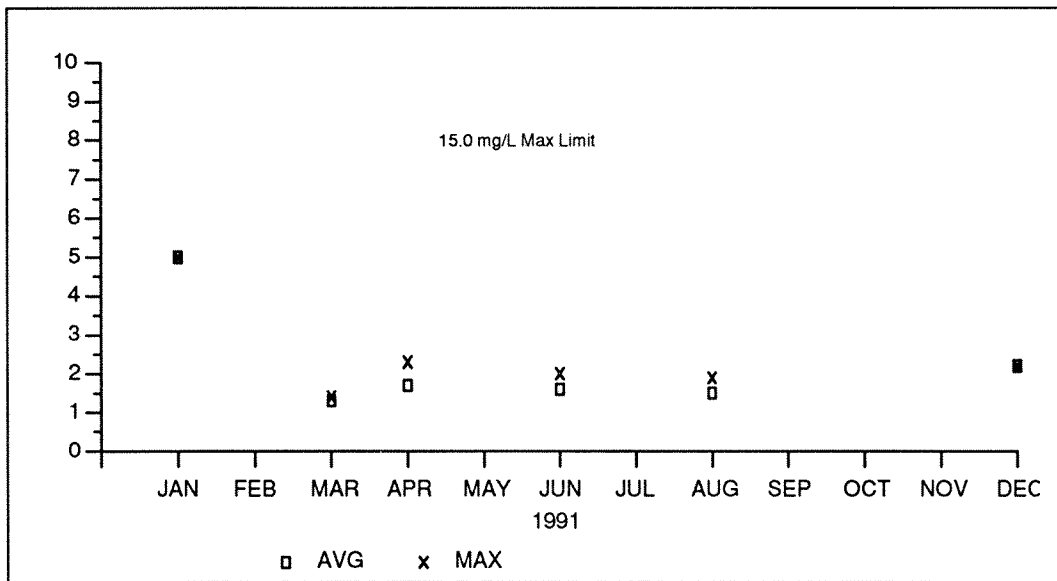


Figure C - 5.23

OIL AND GREASE
(mg/L)

Outfall 001

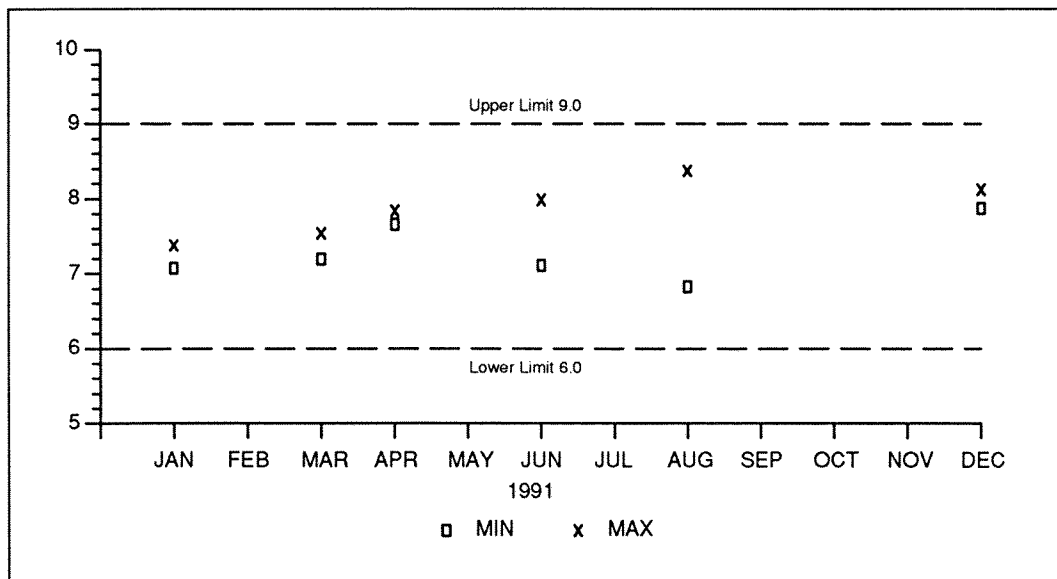


Figure C - 5.24

pH
(standard units)

Outfall 001

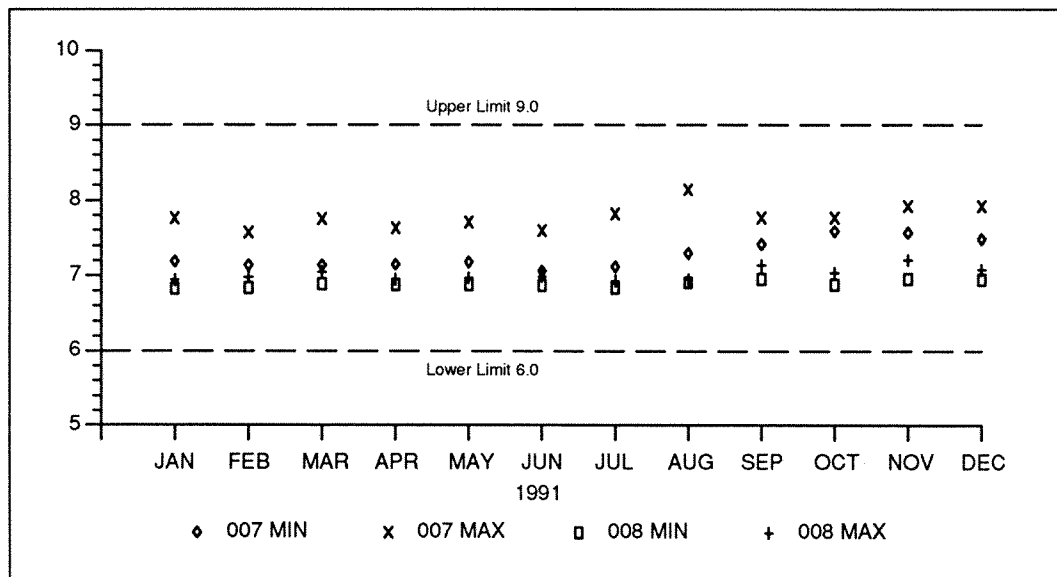


Figure C - 5.25

pH
(standard units)

**Outfalls 007 and
008**

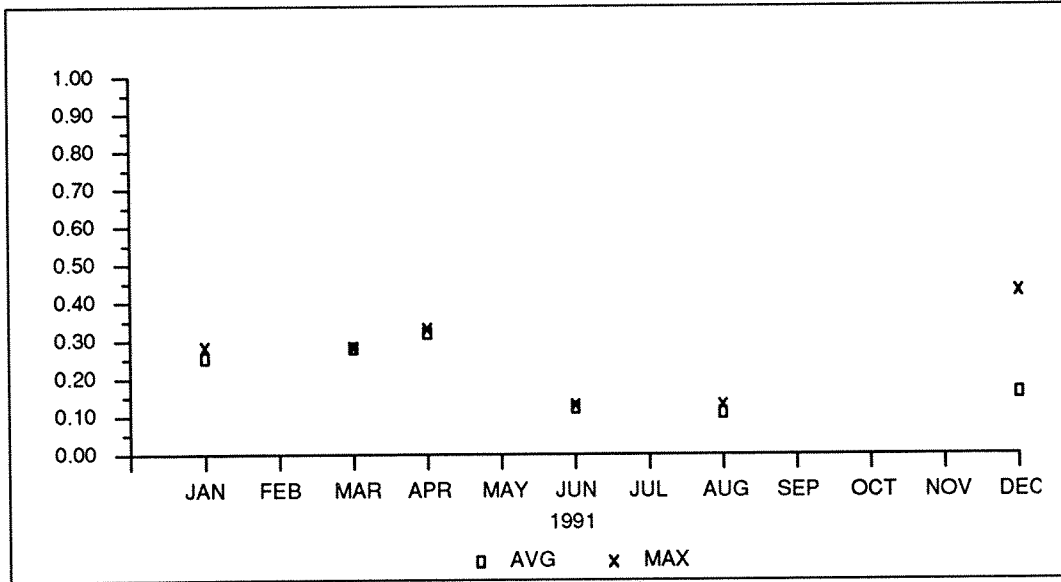


Figure C - 5.26

DISCHARGE RATE
(MGD)

Outfall 001

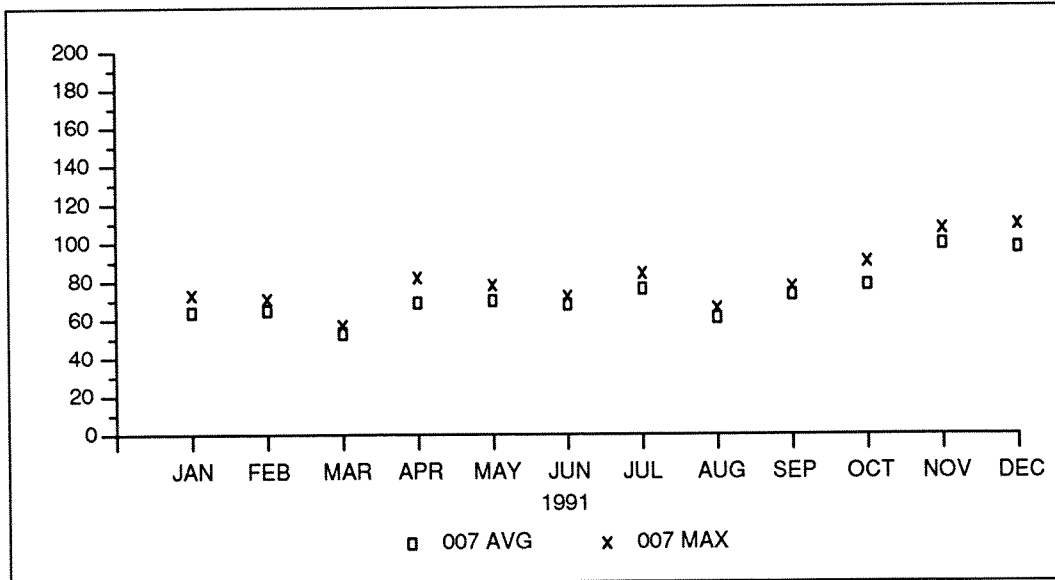


Figure C - 5.27

DISCHARGE RATE
(GPD x 1000)

Outfall 007

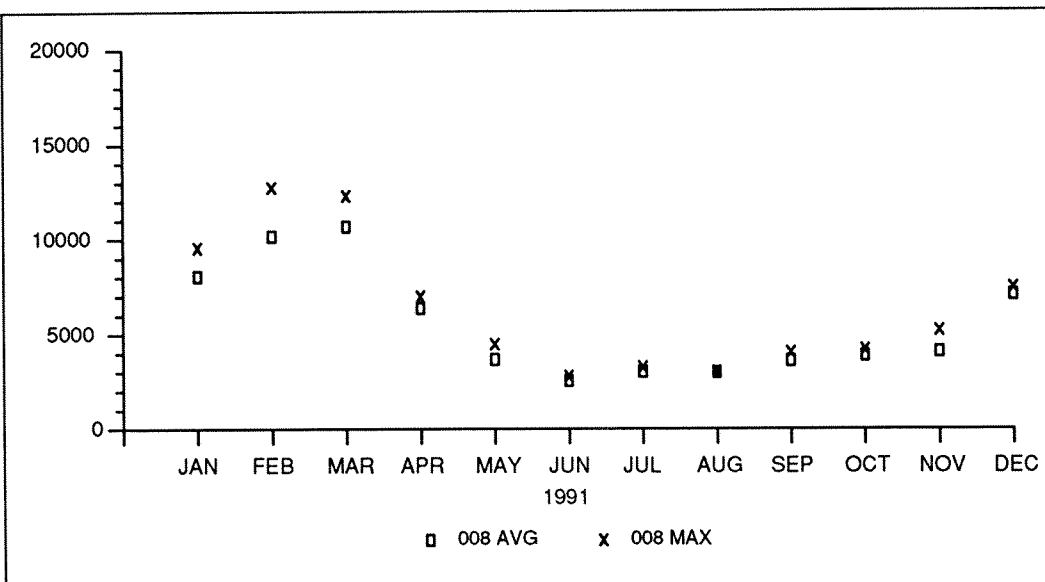


Figure C - 5.28

DISCHARGE RATE
(GPD)

Outfall 008

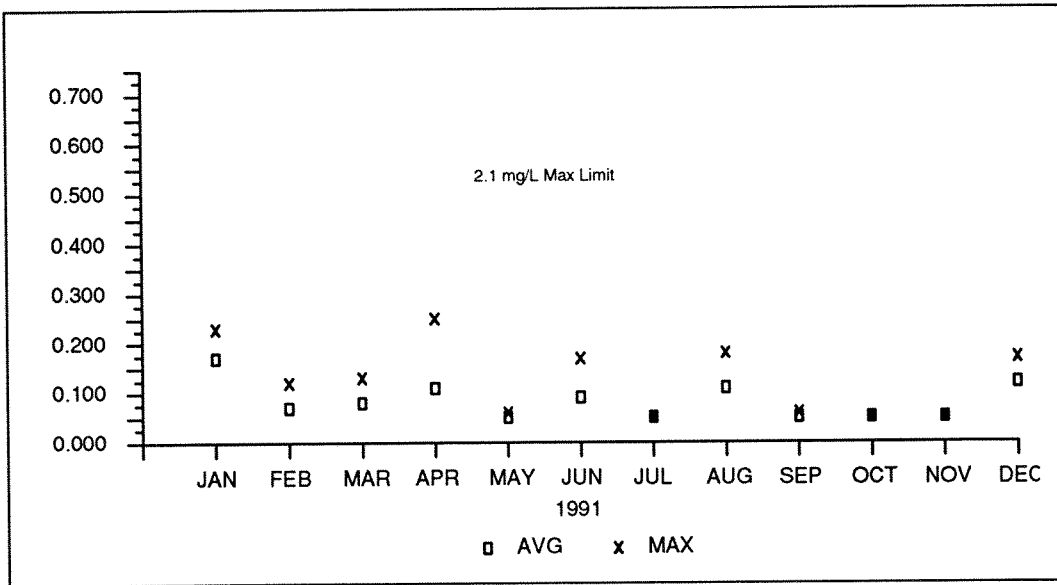


Figure C - 5.29

FLOW-WEIGHTED
AVERAGES
(mg/L)

Ammonia

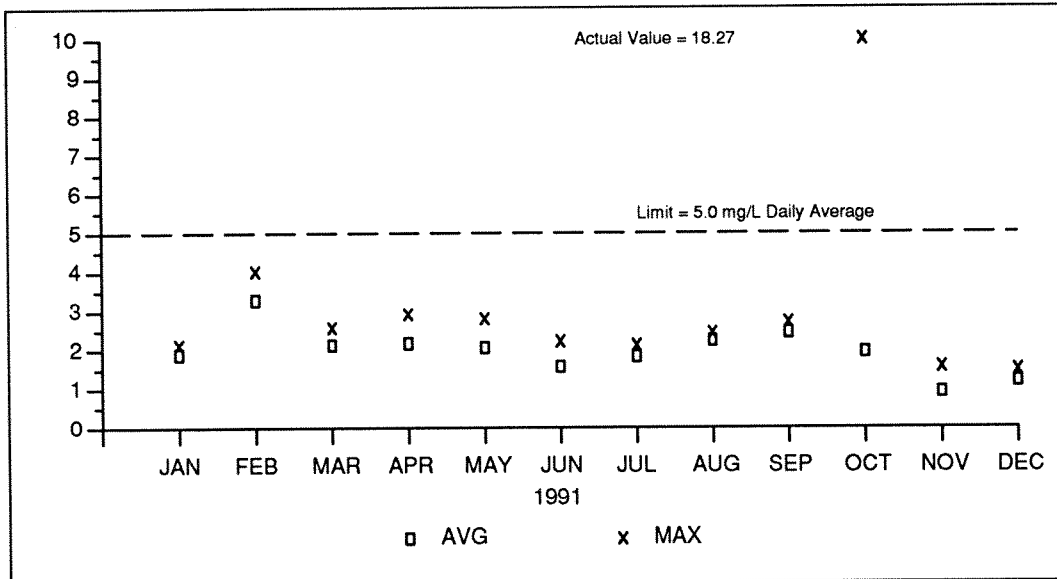


Figure C - 5.30

FLOW-WEIGHTED
AVERAGES
(mg/L)

**Biochemical
Oxygen
Demand-5**

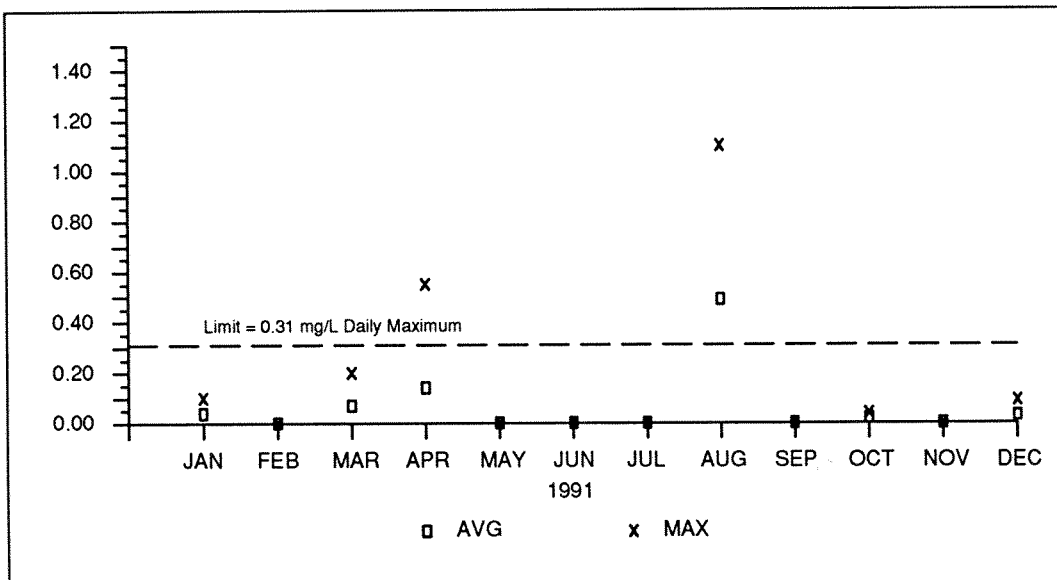


Figure C - 5.31

FLOW-WEIGHTED
AVERAGES
(mg/L)

Iron

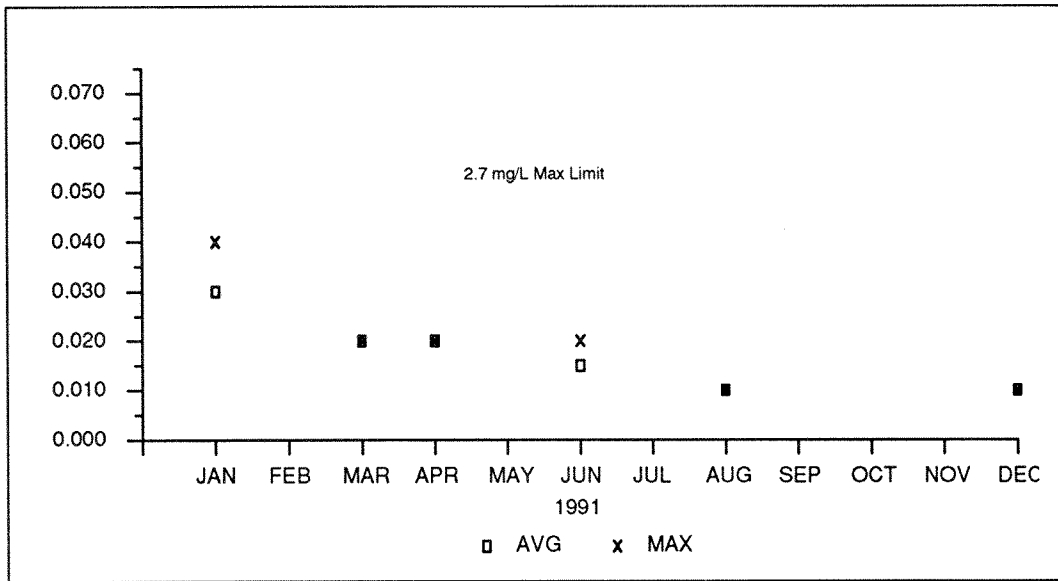


Figure C - 5.32

NICKEL
(mg/L)

Outfall 001

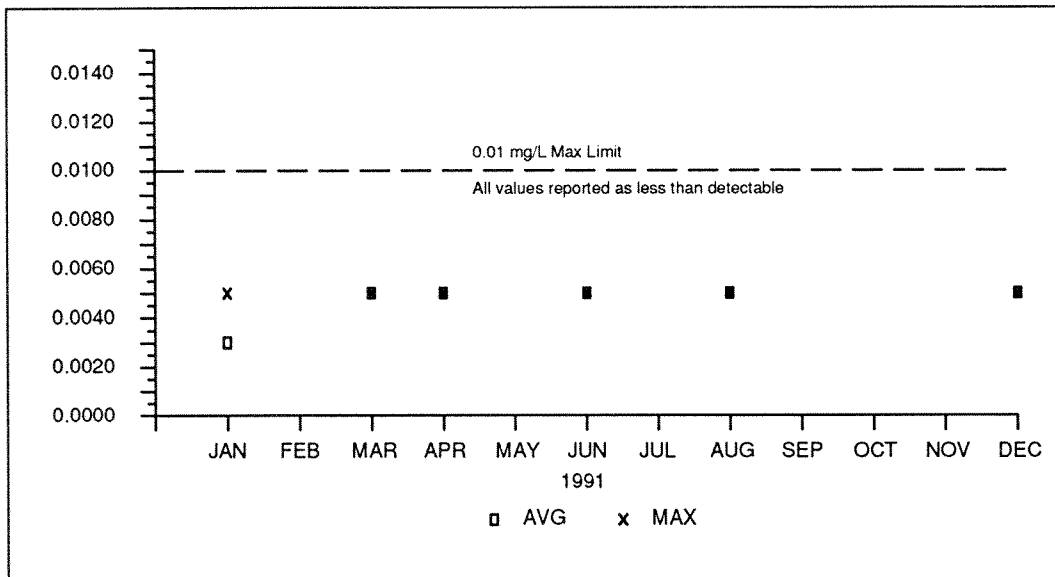


Figure C - 5.33

TRICHLOROFLUOROMETHANE

(mg/L)

Outfall 001

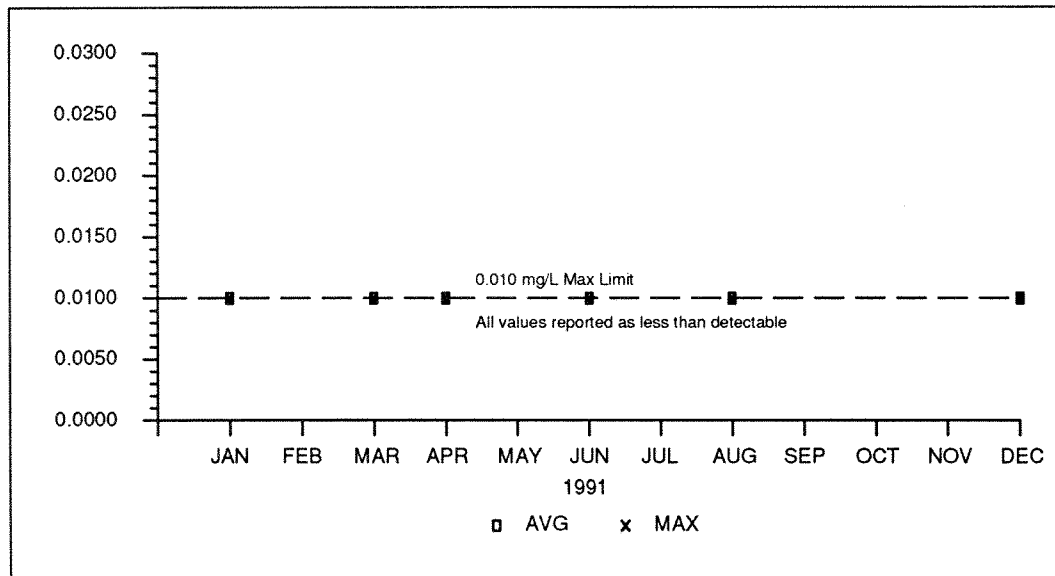


Figure C - 5.34

3,3-DICHLOROBENZIDINE

(mg/L)

Outfall 001

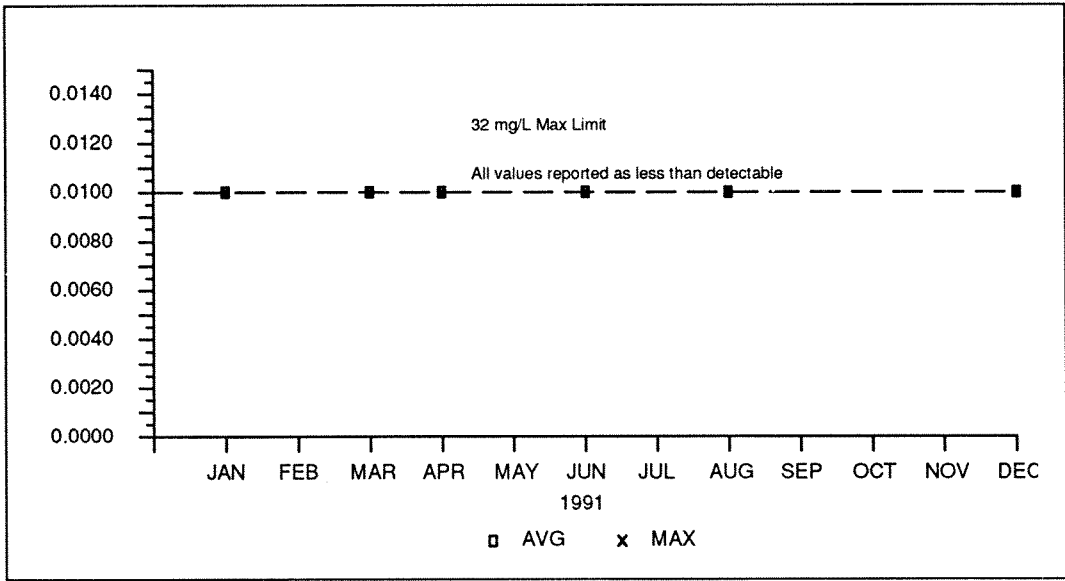


Figure C - 5.35

TRIBUTYL PHOSPHATE
(mg/L)

Outfall 001

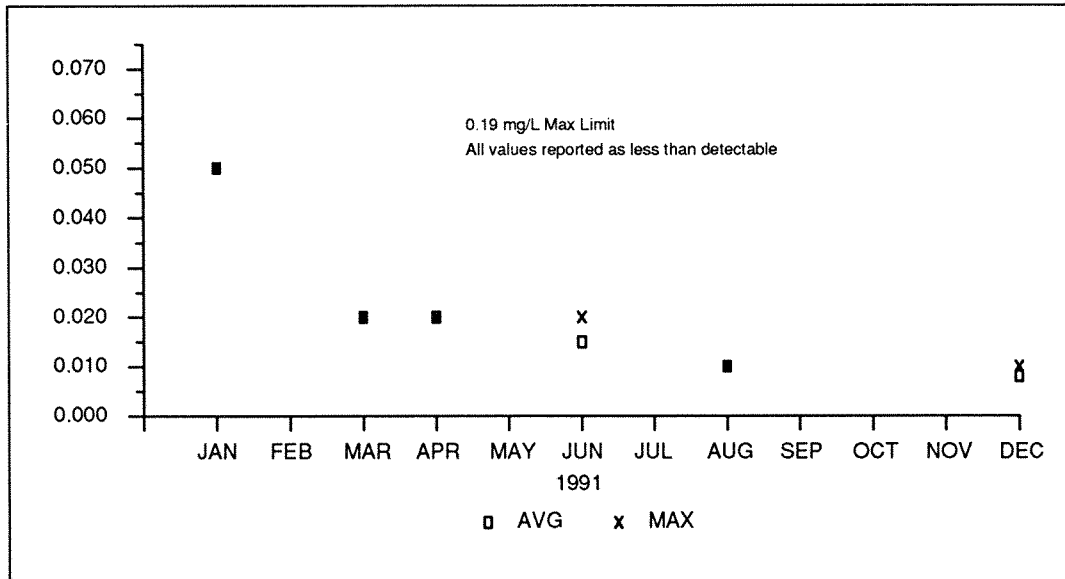


Figure C - 5.36

VANADIUM
(mg/L)

Outfall 001

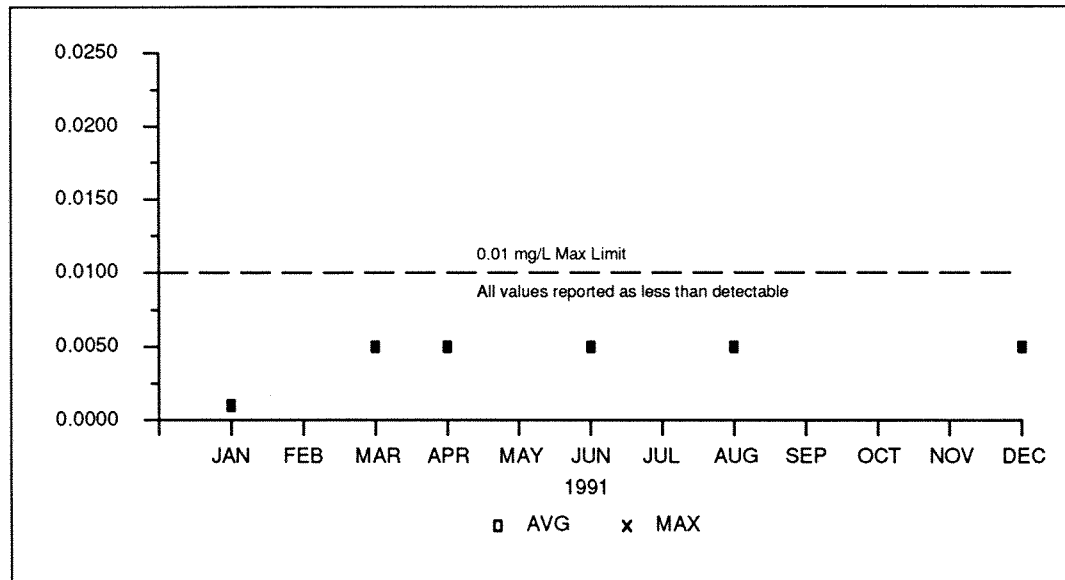


Figure C - 5.37

DICHLORODIFLUOROMETHANE
(mg/L)

Outfall 001