

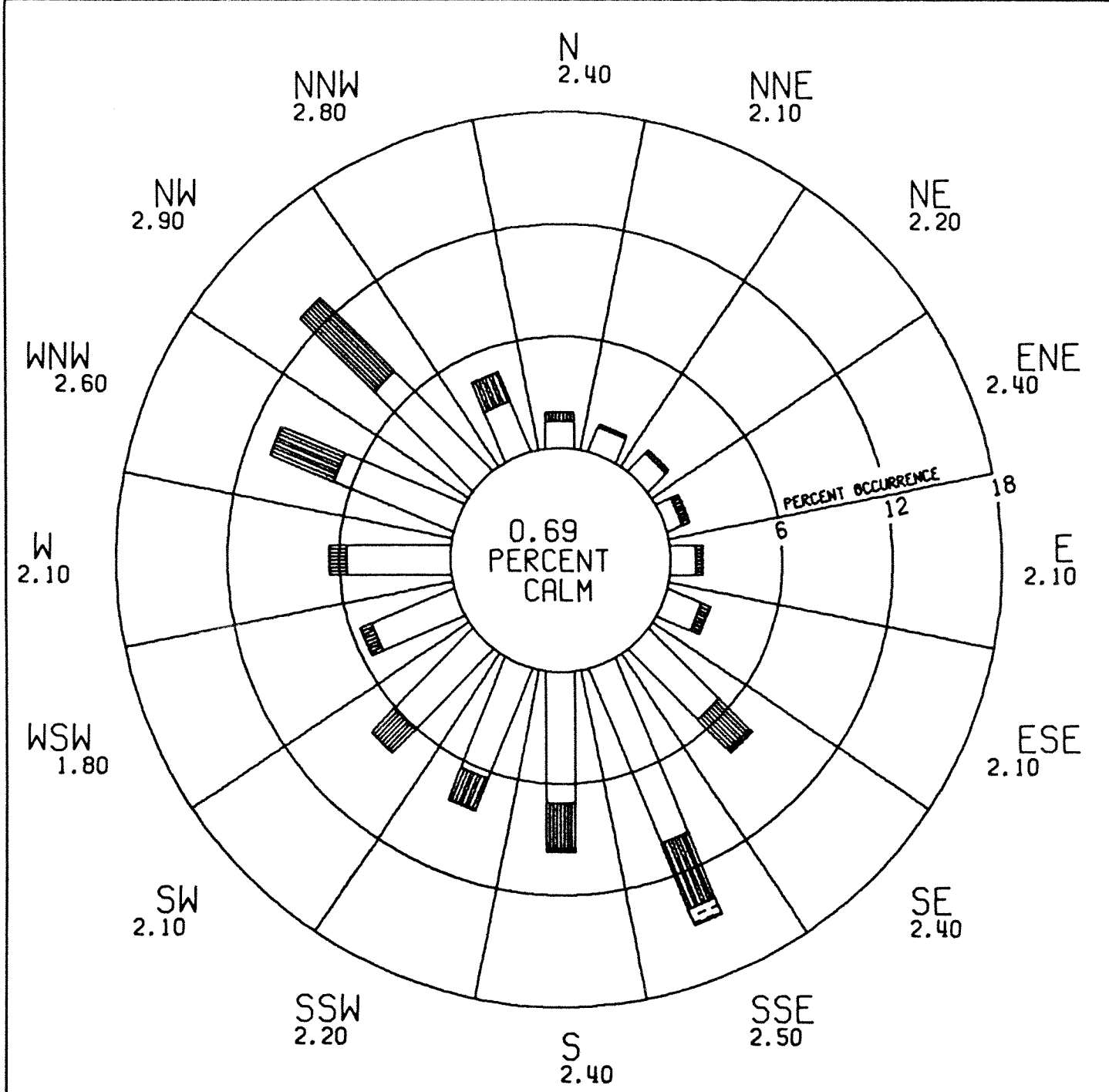


**On-site Meteorological Tower and Rain Gage**

---

# ***Appendix C - 6***

***Summary of Meteorological Data***

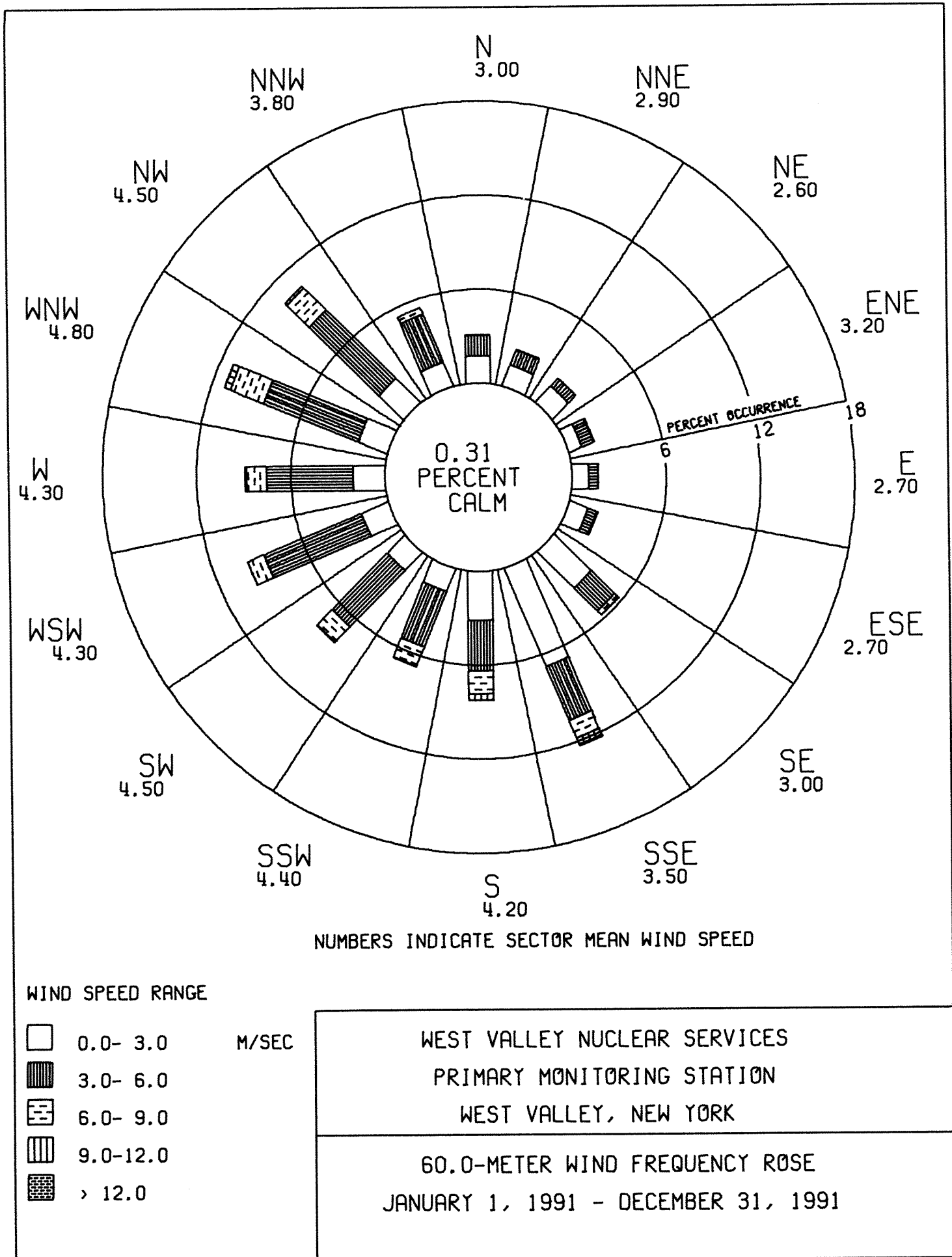


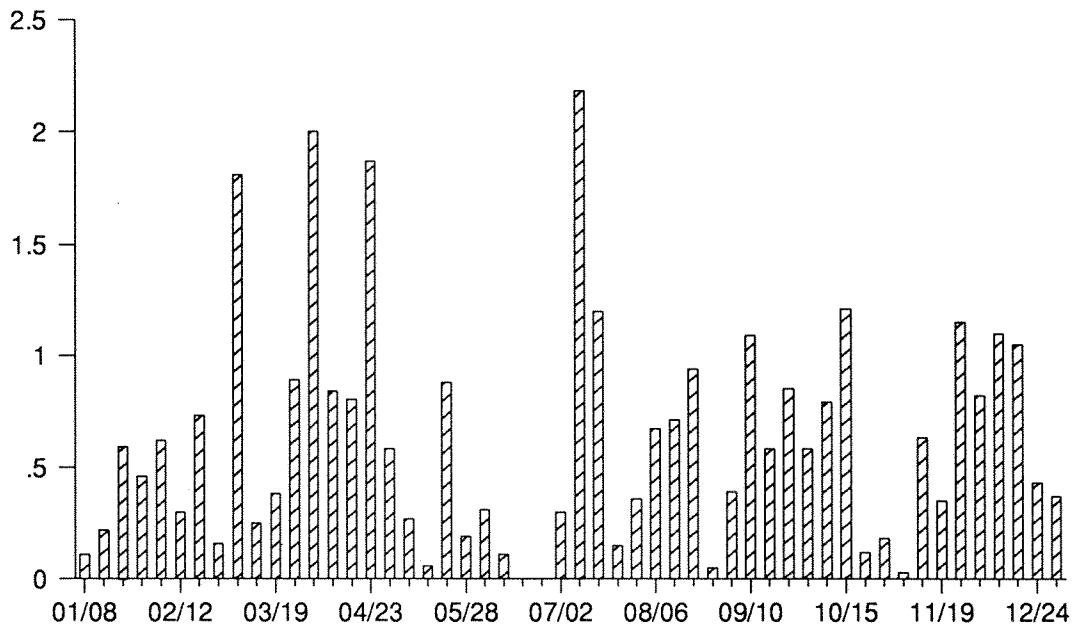
WIND SPEED RANGE

- 0.0- 3.0 M/SEC
- ▨ 3.0- 6.0
- ▧ 6.0- 9.0
- ▩ 9.0-12.0
- > 12.0

WEST VALLEY NUCLEAR SERVICES  
 PRIMARY MONITORING STATION  
 WEST VALLEY, NEW YORK

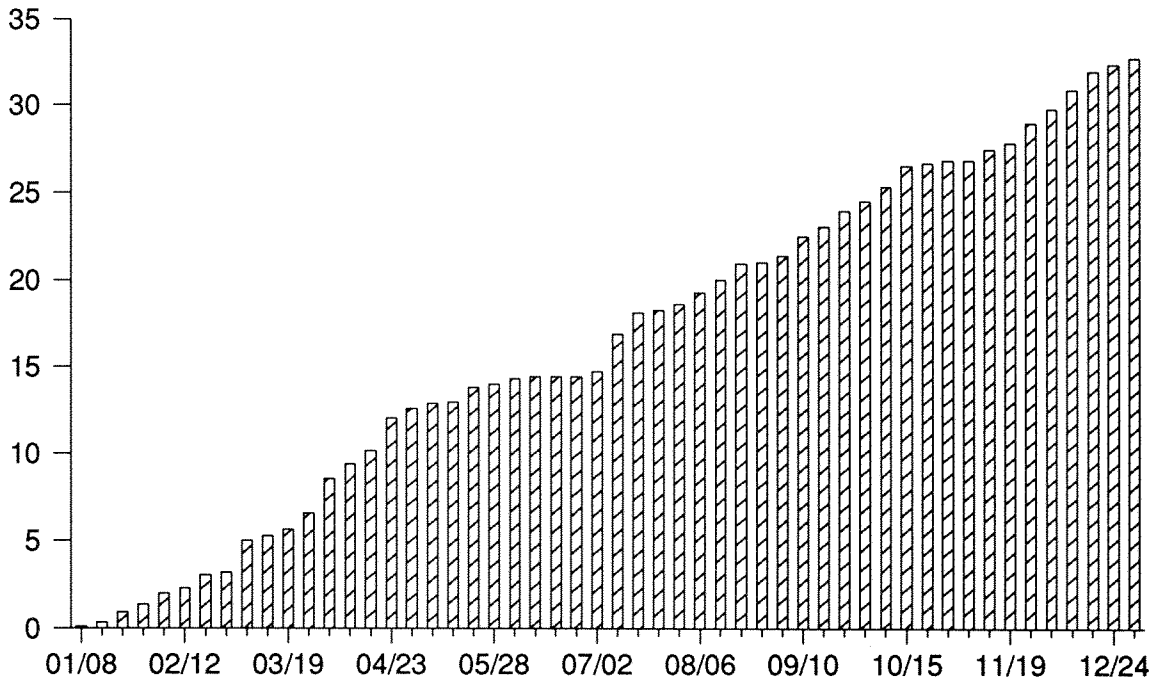
10.0-METER WIND FREQUENCY ROSE  
 JANUARY 1, 1991 - DECEMBER 31, 1991





**Figure C-6.3**

**1991 Weekly Total Rainfall (inches)**



**Figure C-6.4**

**1991 Cumulative Total Rainfall (inches)**

**Table C - 6.1**  
**1991 Site Rainfall Collection Data (inches) for Week Ending:**

<i>JAN 08</i>	0.11	<i>APR 09</i>	0.84	<i>JUL 09</i>	2.18	<i>OCT 08</i>	0.79
<i>JAN 15</i>	0.22	<i>APR 16</i>	0.80	<i>JUL 16</i>	1.20	<i>OCT 15</i>	1.21
<i>JAN 22</i>	0.59	<i>APR 23</i>	1.87	<i>JUL 23</i>	0.15	<i>OCT 22</i>	0.12
<i>JAN 29</i>	0.46	<i>APR 30</i>	0.58	<i>JUL 30</i>	0.36	<i>OCT 29</i>	0.18
<i>FEB 05</i>	0.62	<i>MAY 07</i>	0.27	<i>AUG 06</i>	0.67	<i>NOV 05</i>	0.03
<i>FEB 12</i>	0.30	<i>MAY 14</i>	0.06	<i>AUG 13</i>	0.71	<i>NOV 12</i>	0.63
<i>FEB 19</i>	0.73	<i>MAY 21</i>	0.88	<i>AUG 20</i>	0.94	<i>NOV 19</i>	0.35
<i>FEB 26</i>	0.16	<i>MAY 28</i>	0.19	<i>AUG 27</i>	0.05	<i>NOV 26</i>	1.15
<i>MAR 05</i>	1.81	<i>JUN 06</i>	0.31	<i>SEP 03</i>	0.39	<i>DEC 03</i>	0.82
<i>MAR 12</i>	0.25	<i>JUN 11</i>	0.11	<i>SEP 10</i>	1.09	<i>DEC 10</i>	1.10
<i>MAR 19</i>	0.38	<i>JUN 18</i>	0.00	<i>SEP 17</i>	0.58	<i>DEC 17</i>	1.05
<i>MAR 26</i>	0.89	<i>JUN 25</i>	0.00	<i>SEP 24</i>	0.85	<i>DEC 24</i>	0.43
<i>APR 02</i>	2.00	<i>JUL 02</i>	0.30	<i>OCT 01</i>	0.58	<i>DEC 31</i>	0.37