

Figure 3-7. pH in Groundwater Samples from the Sand and Gravel Unit

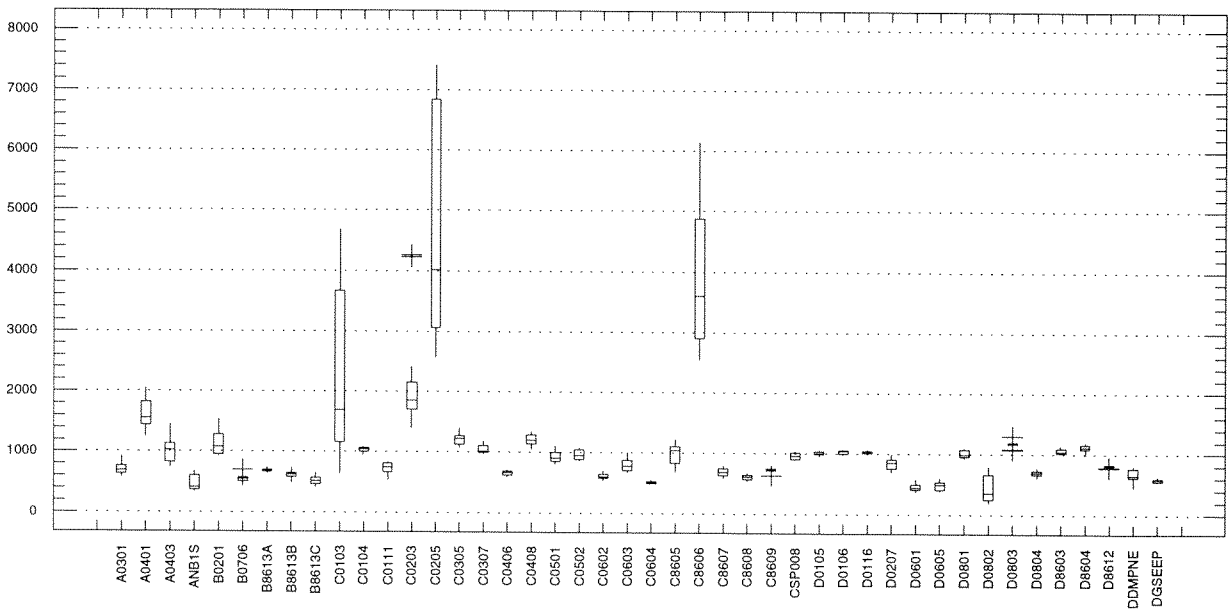


Figure 3-8. Conductivity ($\mu\text{mhos/cm}$ @ 25°C) from the Sand and Gravel Unit

Wells are arranged in general upgradient to downgradient order, reading from left to right.

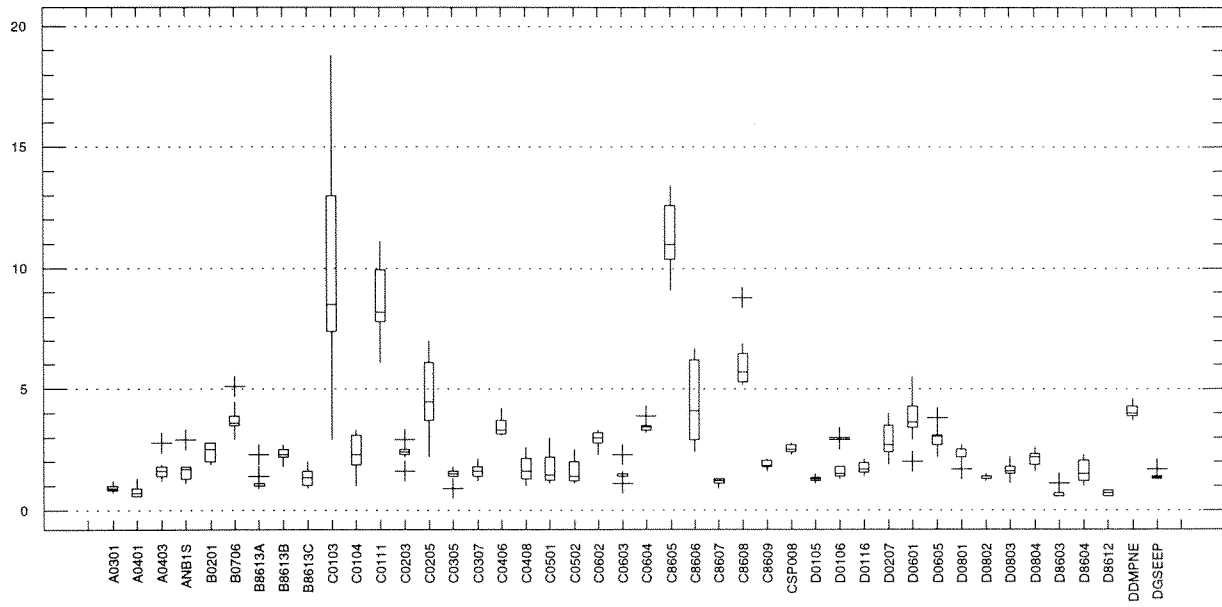


Figure 3-9. Total Organic Carbon (mg/L) in Groundwater Samples from the Sand and Gravel Unit

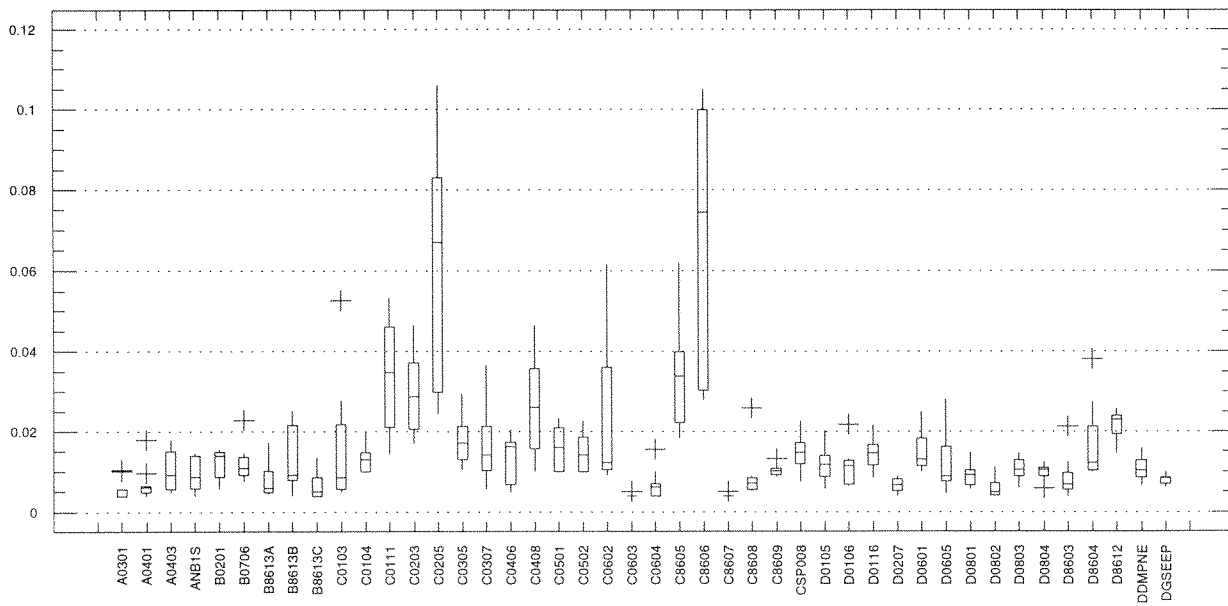


Figure 3-10. Total Organic Halogens (mg/L) in Groundwater Samples from the Sand and Gravel Unit

Wells are arranged in general upgradient to downgradient order, reading from left to right.

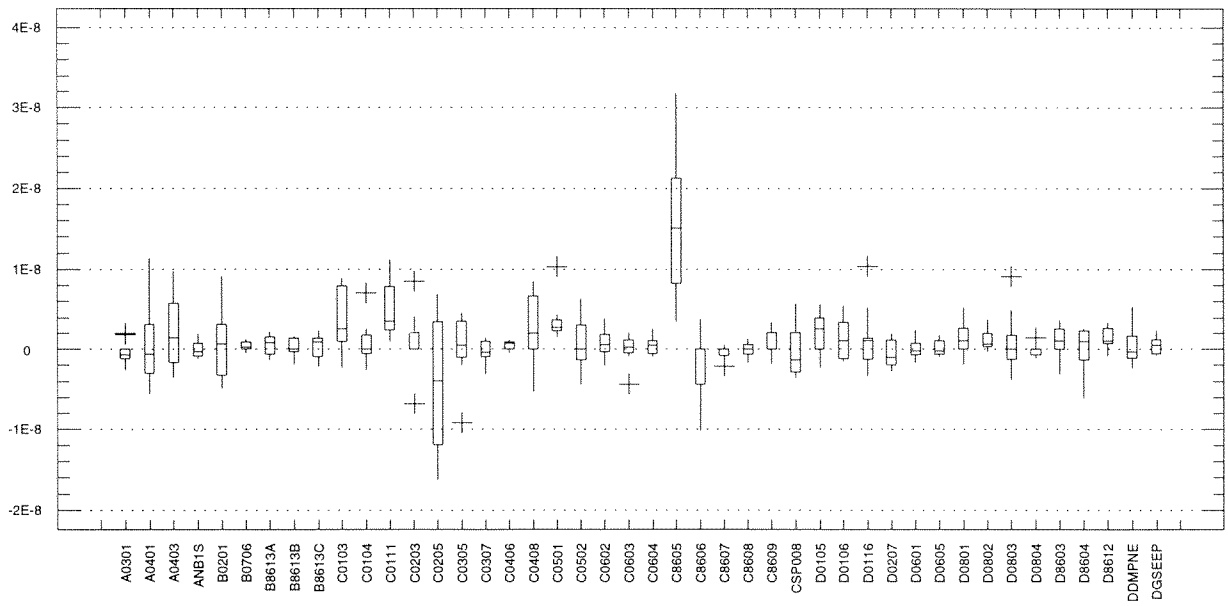


Figure 3-11. Gross Alpha ($\mu\text{Ci/mL}$) in Groundwater Samples from the Sand and Gravel Unit

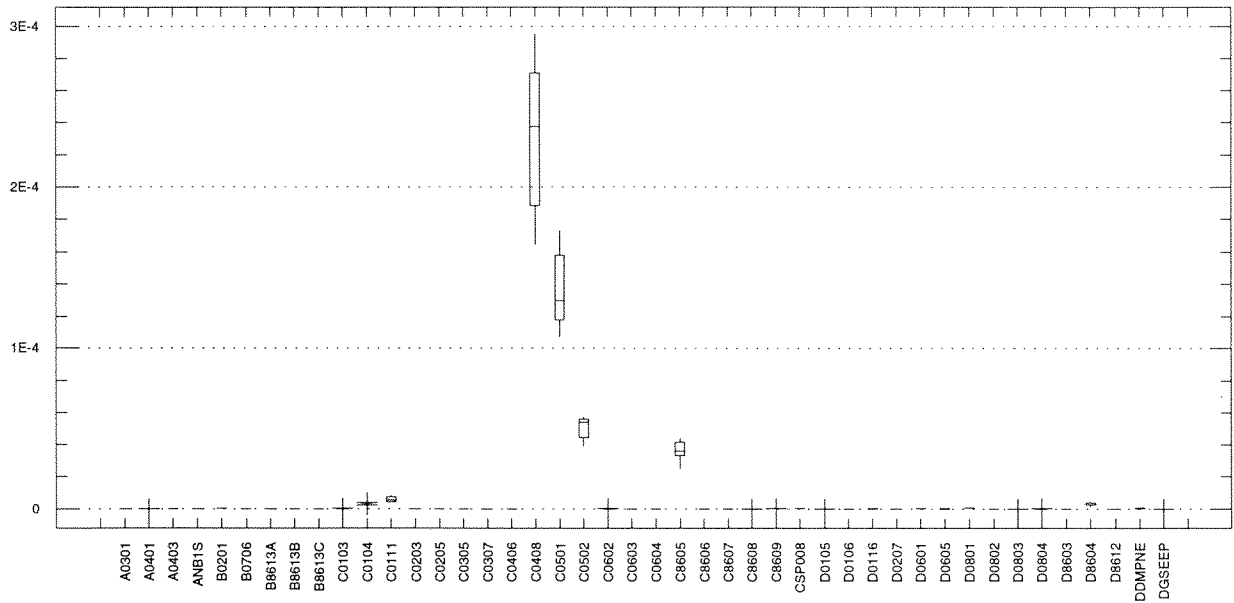


Figure 3-12. Gross Beta ($\mu\text{Ci/mL}$) in Groundwater Samples from the Sand and Gravel Unit
 Figures 3-12a and 3-12b follow with expanded scales

Wells are arranged in general upgradient to downgradient order, reading from left to right.

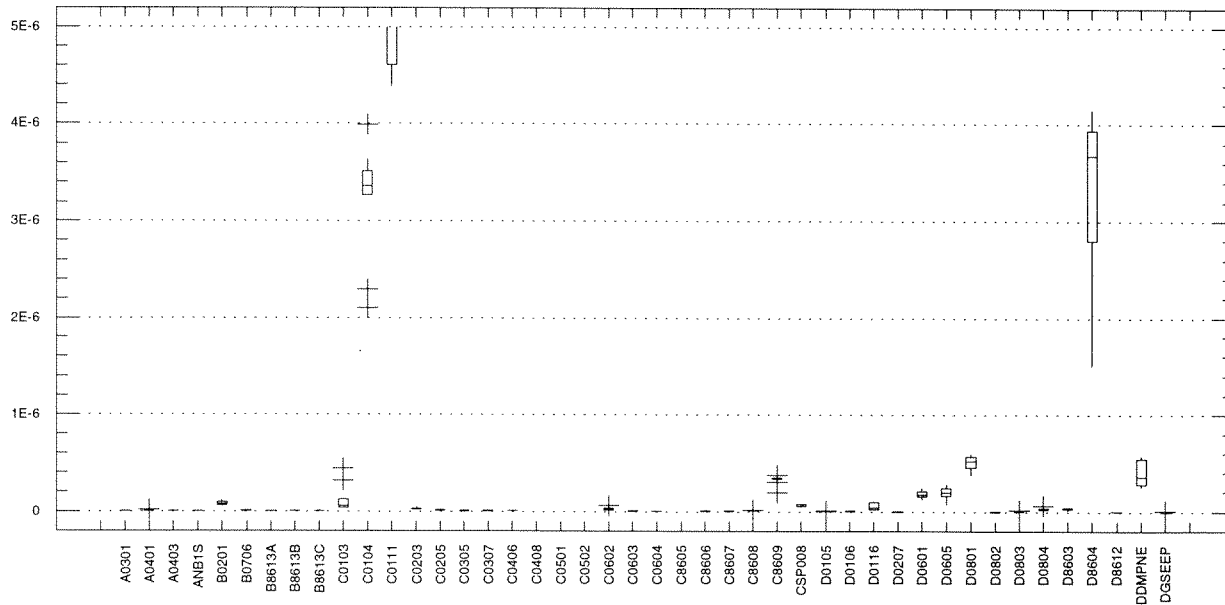


Figure 3-12a. Gross Beta ($\mu\text{Ci/mL}$) in Groundwater Samples from the Sand and Gravel Unit (expanded scale)

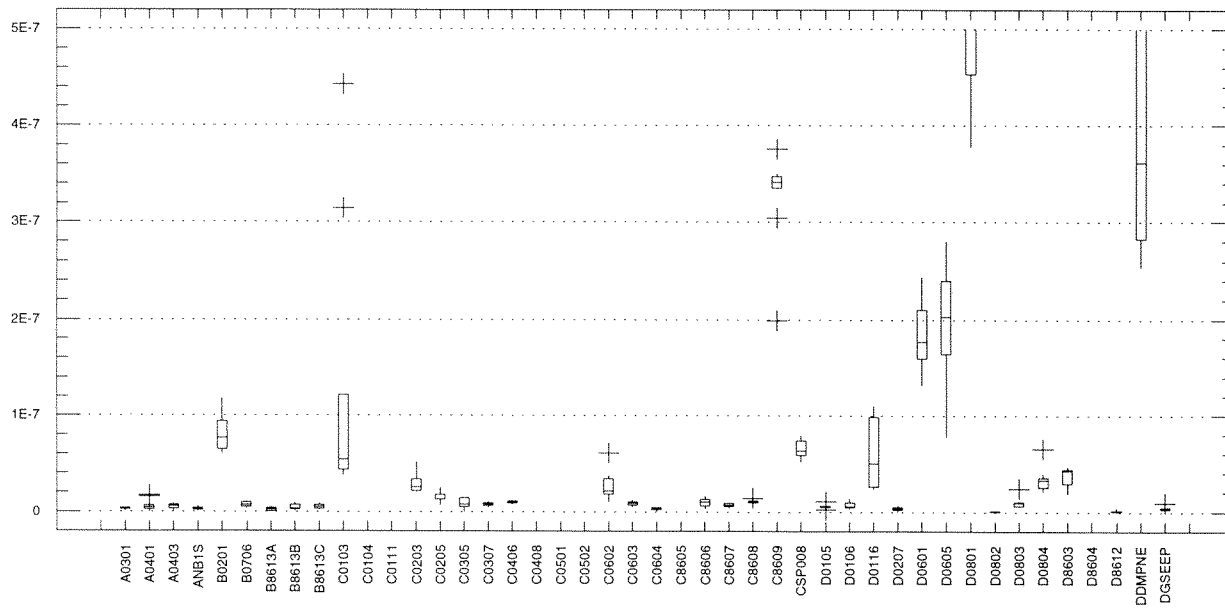


Figure 3-12b. Gross Beta ($\mu\text{Ci/mL}$) in Groundwater Samples from the Sand and Gravel Unit (expanded scale of Fig. 3-12a)

Wells are arranged in general upgradient to downgradient order, reading from left to right.

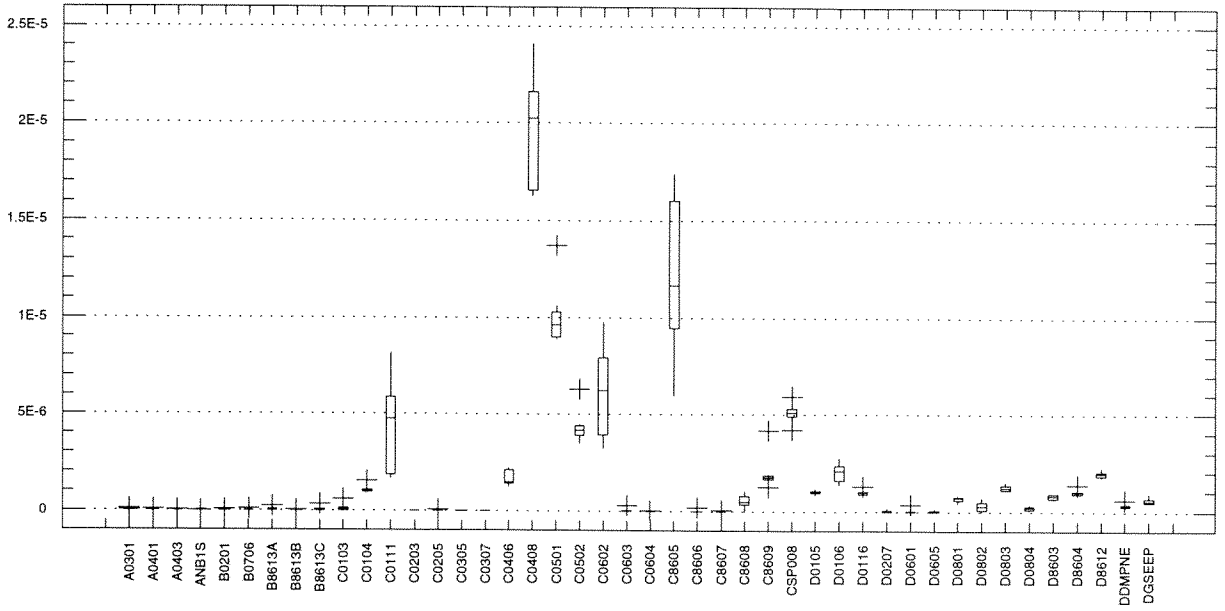


Figure 3-13. Tritium Activity ($\mu\text{Ci/mL}$) in Groundwater Samples from the Sand and Gravel Unit
Figure 3-13a follows with expanded scale

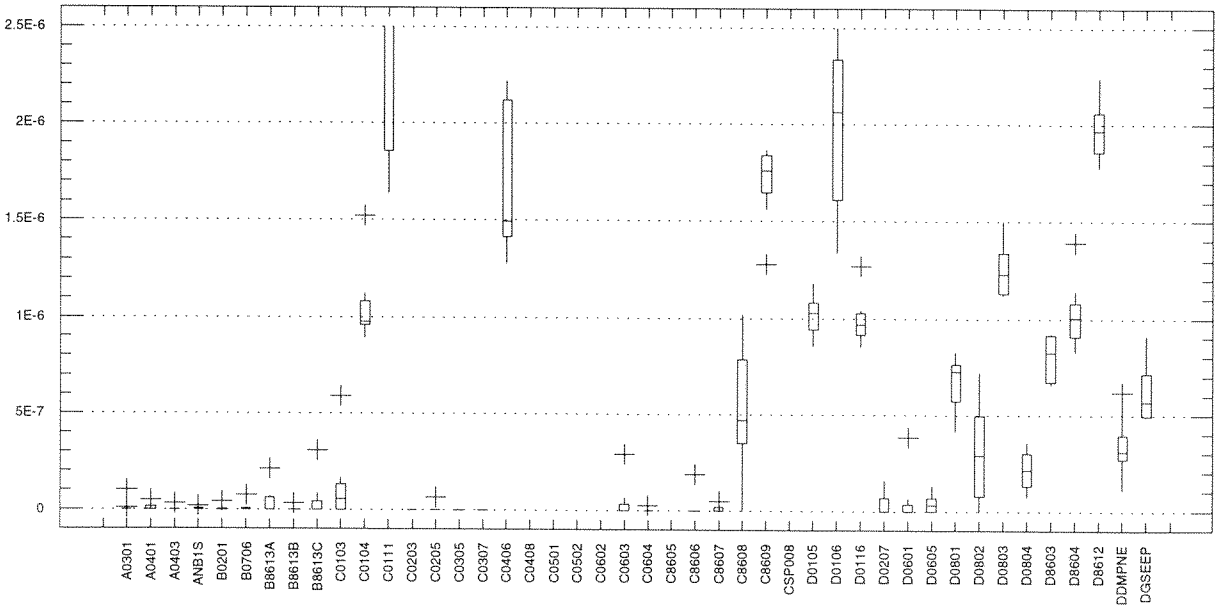


Figure 3-13a. Tritium Activity ($\mu\text{Ci/mL}$) in Groundwater Samples from the Sand and Gravel Unit (expanded scale)

Wells are arranged in general upgradient to downgradient order, reading from left to right.

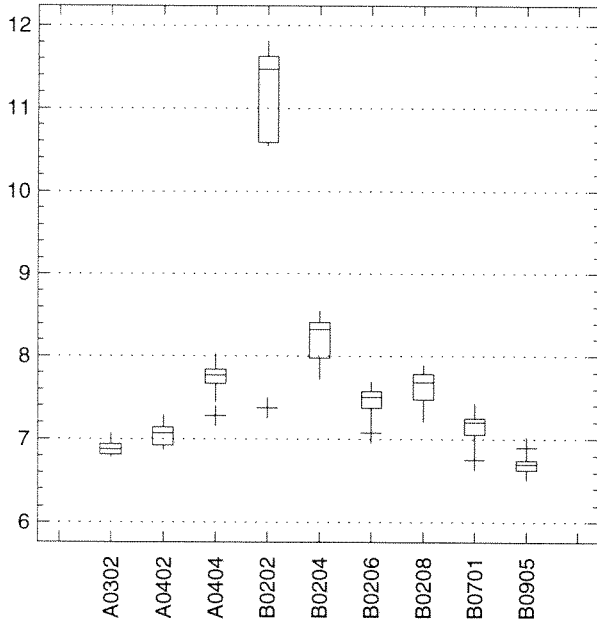


Figure 3-14. pH in Groundwater Samples from the Till-Sand Unit

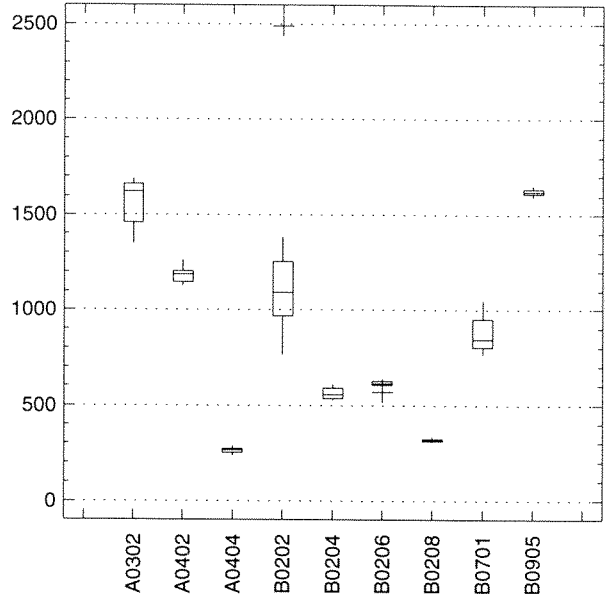


Figure 3-15. Conductivity ($\mu\text{mhos/cm}@25^{\circ}\text{C}$) in Groundwater Samples from the Till-Sand Unit

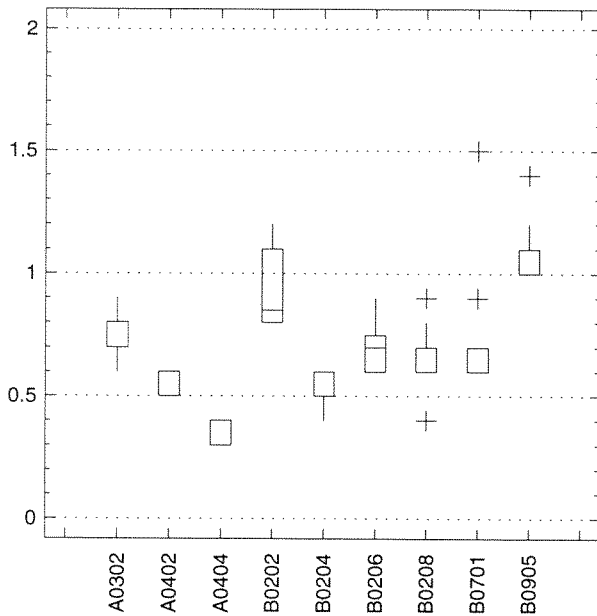


Figure 3-16. Total Organic Carbon (mg/L) in Groundwater Samples from the Till-Sand Unit

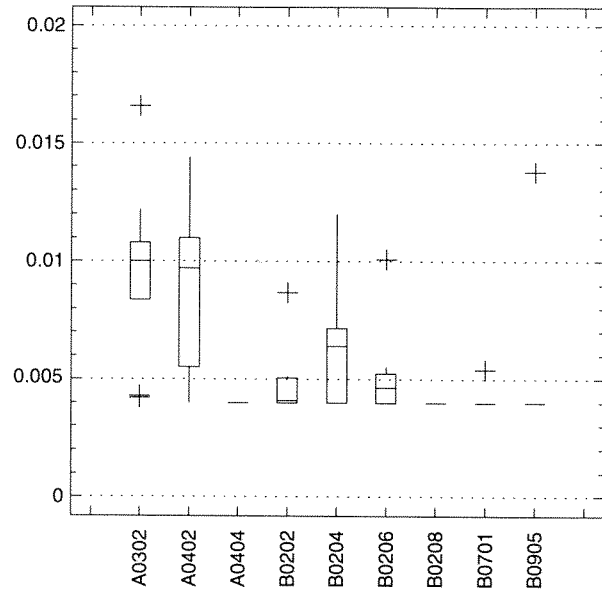


Figure 3-17. Total Organic Halogens (mg/L) in Groundwater Samples from the Till-Sand Unit

Wells are arranged in general upgradient to downgradient order, reading from left to right.

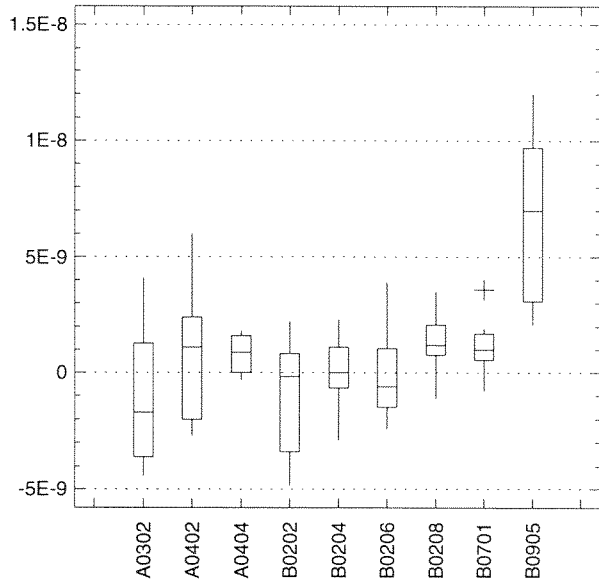


Figure 3-18. Gross Alpha ($\mu\text{Ci}/\text{mL}$) in Groundwater Samples from the Till-Sand Unit

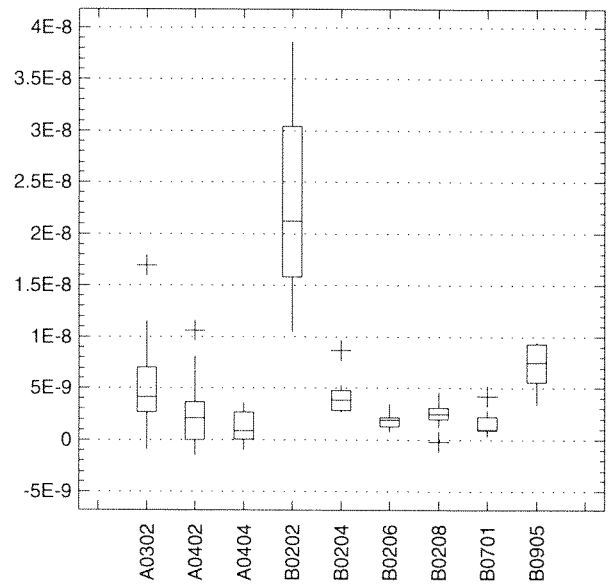


Figure 3-19. Gross Beta ($\mu\text{Ci}/\text{mL}$) in Groundwater Samples from the Till-Sand Unit

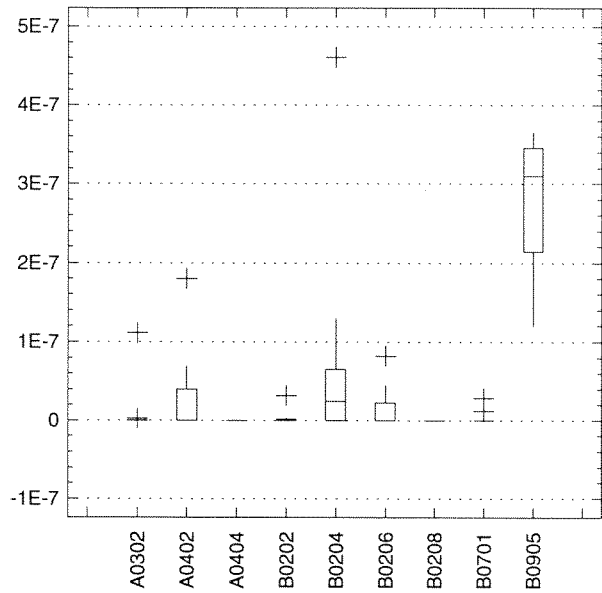


Figure 3-20. Tritium Activity ($\mu\text{Ci}/\text{mL}$) in Groundwater Samples from the Till-Sand Unit

Wells are arranged in general upgradient to downgradient order, reading from left to right.

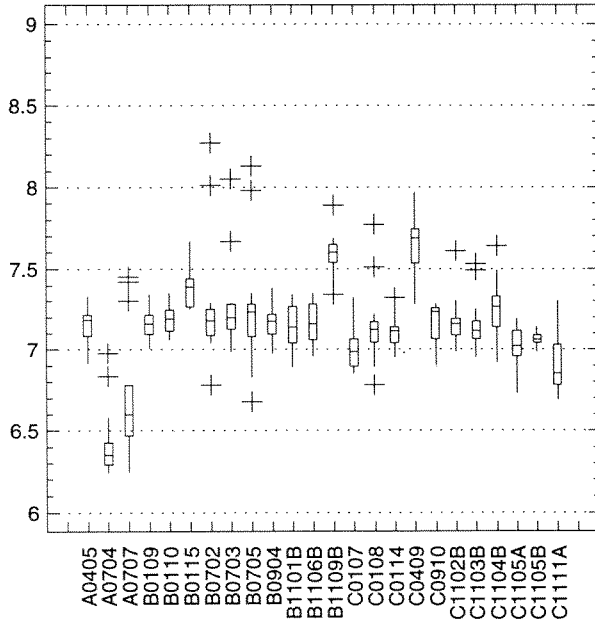


Figure 3-21. pH in Groundwater Samples from the Unweathered Lavery Till Unit

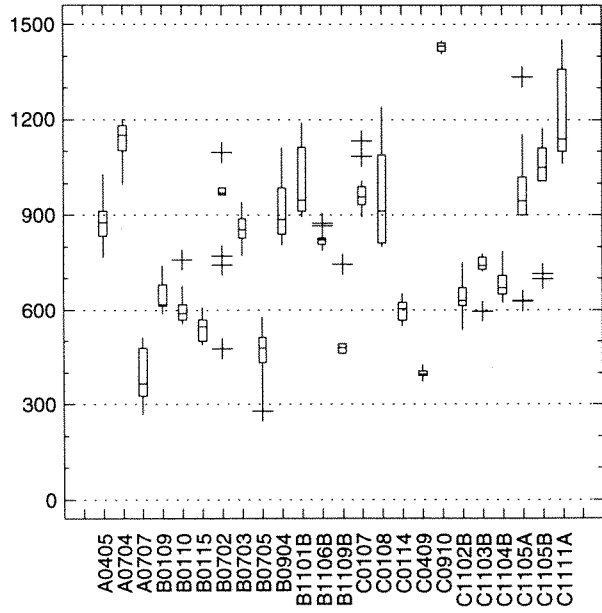


Figure 3-22. Conductivity ($\mu\text{mhos/cm}@25^{\circ}\text{C}$) in Groundwater Samples from the Unweathered Lavery Till Unit

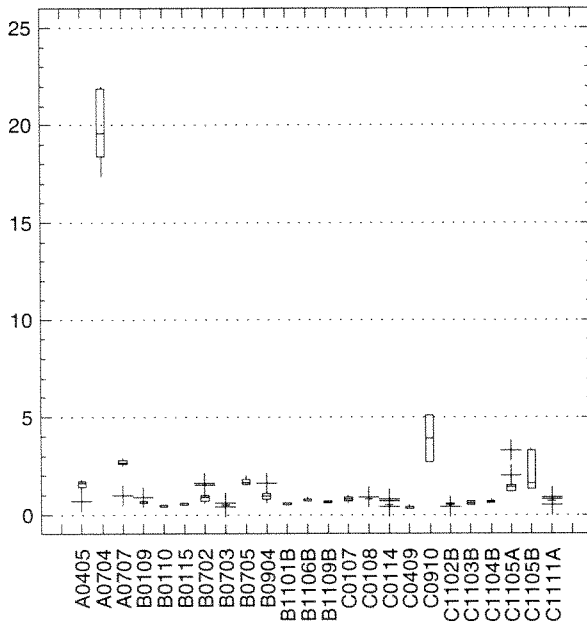


Figure 3-23. Total Organic Carbon (mg/L) in Groundwater Samples from the Unweathered Lavery Till Unit

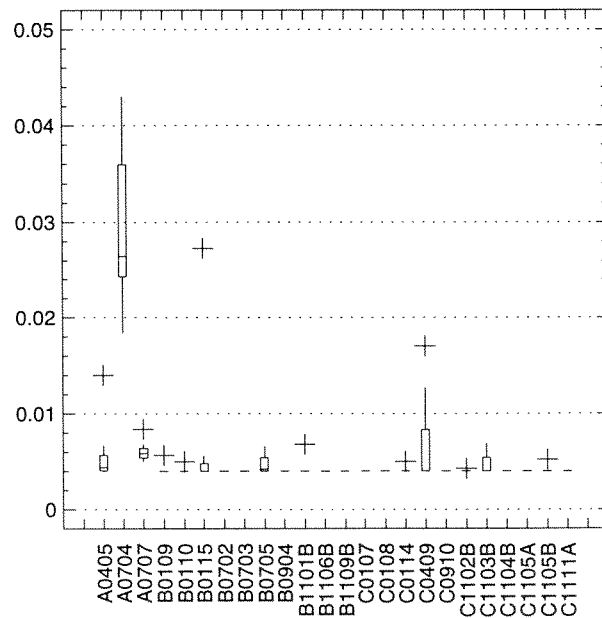


Figure 3-24. Total Organic Halogens (mg/L) in Groundwater Samples from the Unweathered Lavery Till Unit

Wells are arranged in general upgradient to downgradient order, reading from left to right.

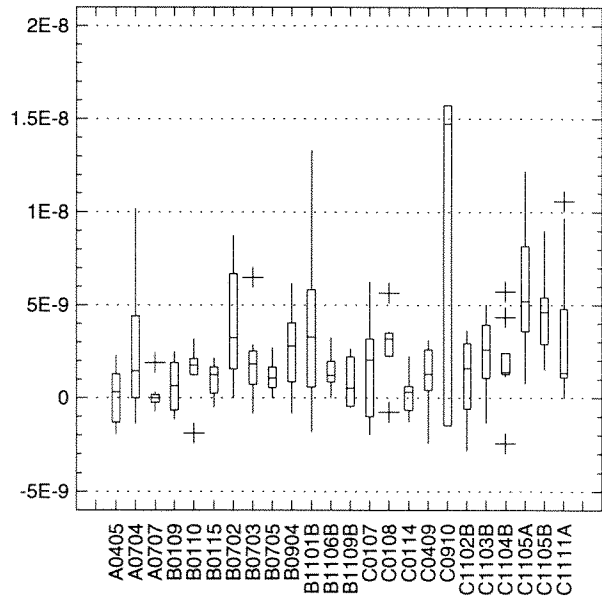


Figure 3-25. Gross Alpha ($\mu\text{Ci/mL}$) in Groundwater Samples from the Unweathered Lavery Till Unit

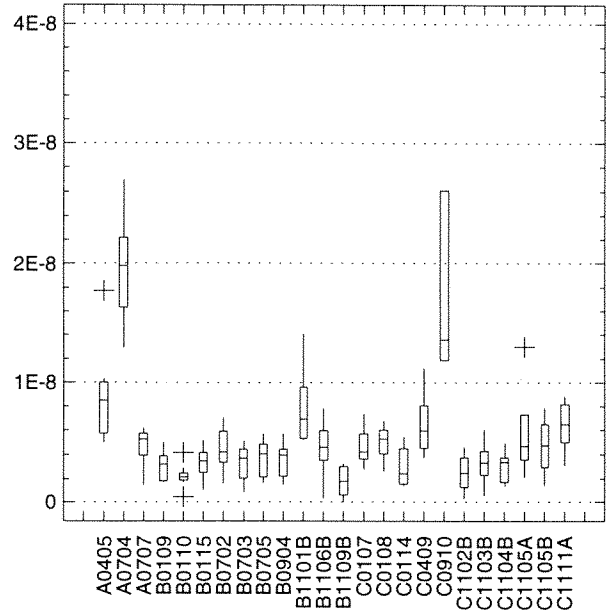


Figure 3-26. Gross Beta ($\mu\text{Ci/mL}$) in Groundwater Samples from the Unweathered Lavery Till Unit

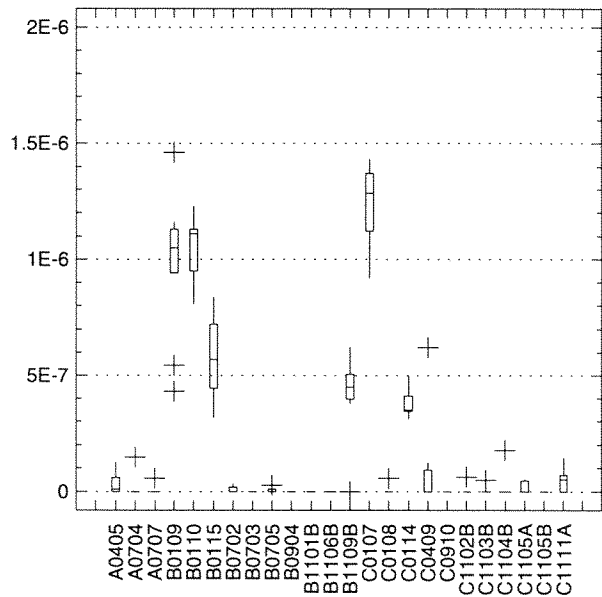


Figure 3-27. Tritium Activity ($\mu\text{Ci/mL}$) in Groundwater Samples from the Unweathered Lavery Till Unit

Wells are arranged in general upgradient to downgradient order, reading from left to right.

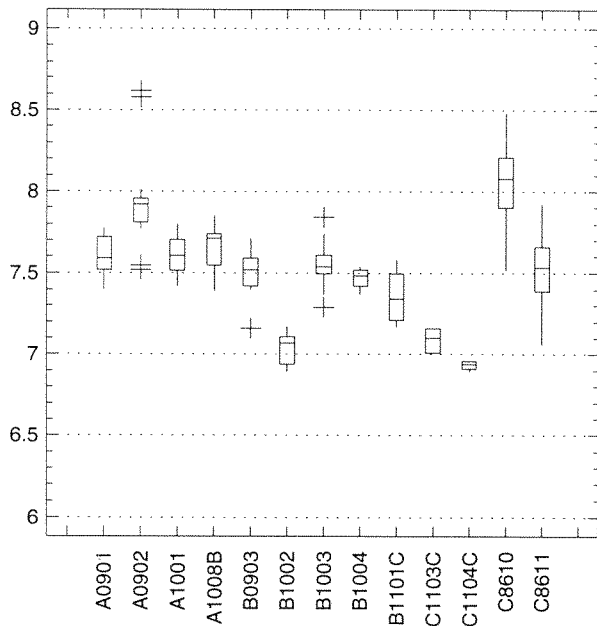


Figure 3-28. pH in Groundwater Samples from the Lacustrine Unit

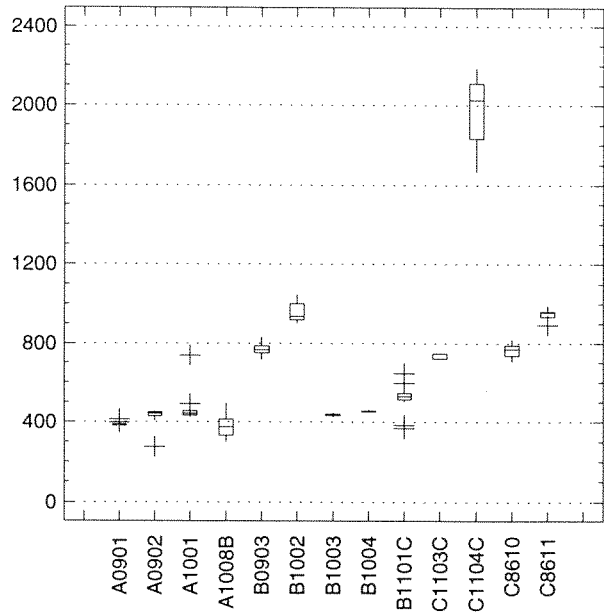


Figure 3-29. Conductivity ($\mu\text{mhos}/\text{cm}@25^{\circ}\text{C}$) in Groundwater Samples from the Lacustrine Unit

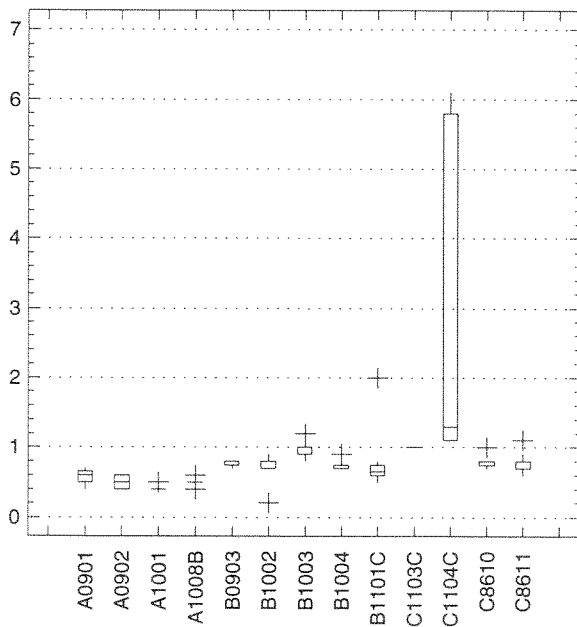


Figure 3-30. Total Organic Carbon (mg/L) in Groundwater Samples from the Lacustrine Unit

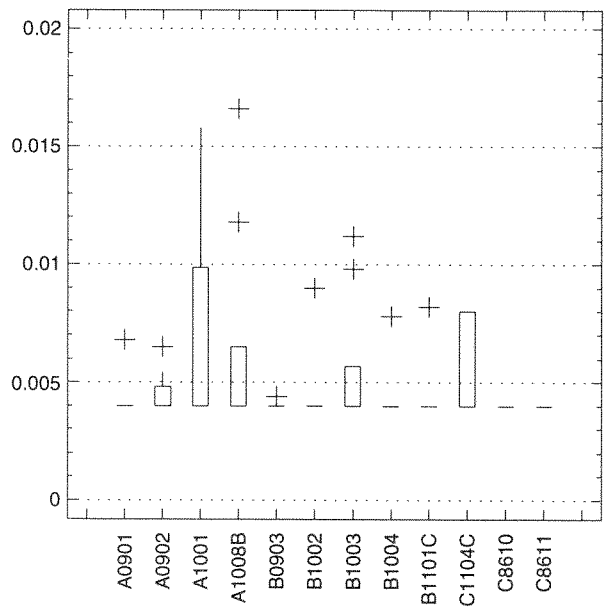


Figure 3-31. Total Organic Halogens (mg/L) in Groundwater Samples from the Lacustrine Unit

Wells are arranged in general upgradient to downgradient order, reading from left to right.

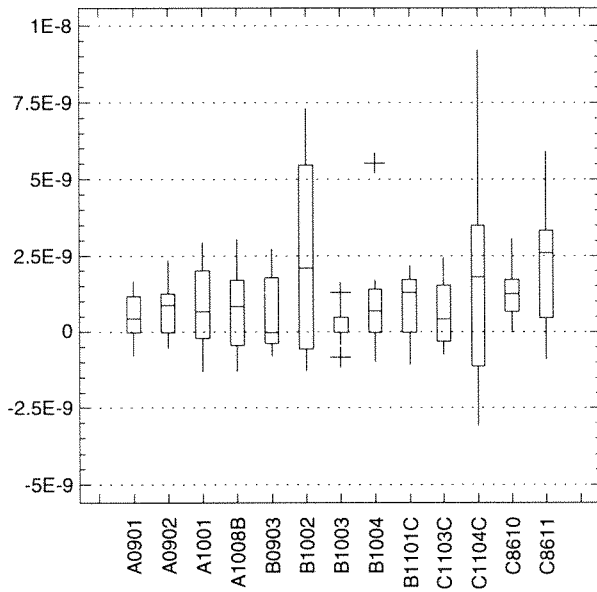


Figure 3-32. Gross Alpha ($\mu\text{Ci}/\text{mL}$) in Groundwater Samples from the Lacustrine Unit

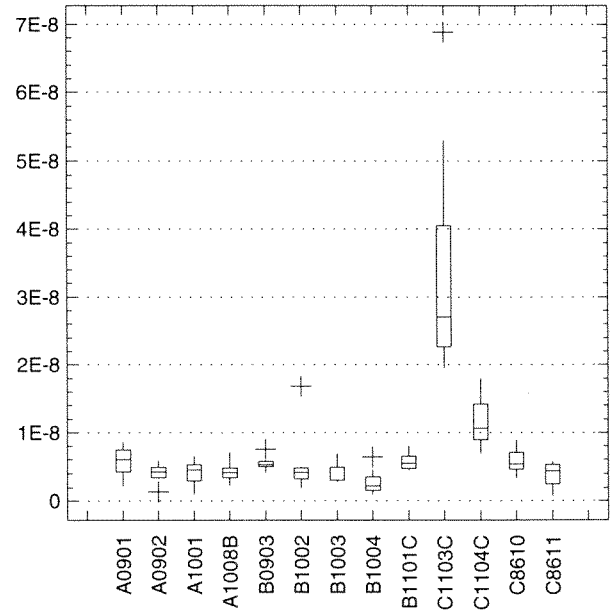


Figure 3-33. Gross Beta ($\mu\text{Ci}/\text{mL}$) in Groundwater Samples from the Lacustrine Unit

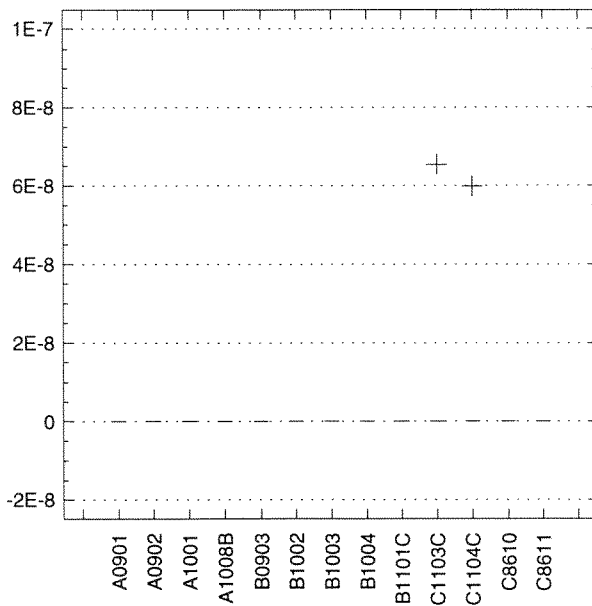


Figure 3-34. Tritium Activity ($\mu\text{Ci}/\text{mL}$) in Groundwater Samples from the Lacustrine Unit

Wells are arranged in general upgradient to downgradient order, reading from left to right.

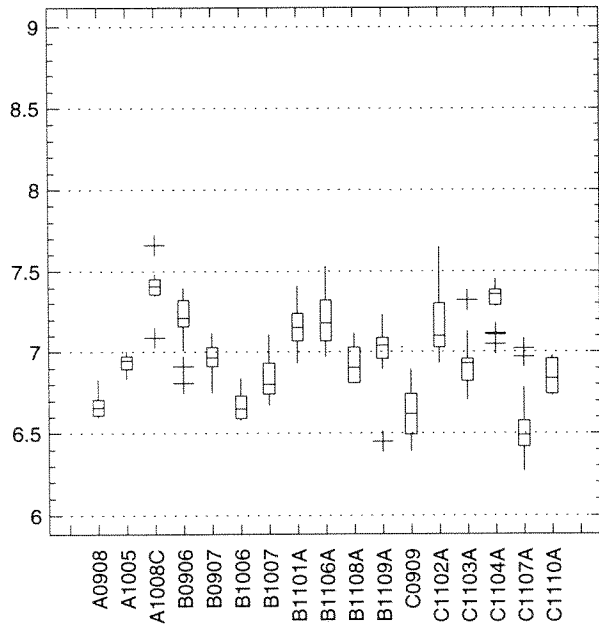


Figure 3-35. pH in Groundwater Samples from the Weathered Lavery Till Unit

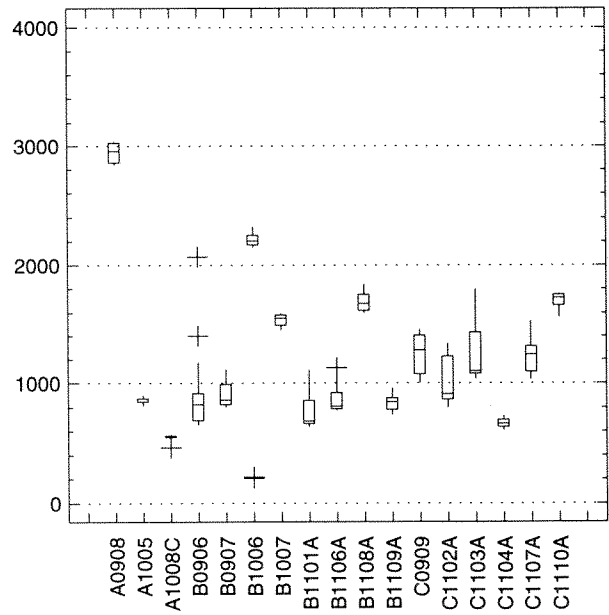


Figure 3-36. Conductivity ($\mu\text{mhos}/\text{cm}@25^{\circ}\text{C}$) in Groundwater Samples from the Weathered Lavery Till Unit

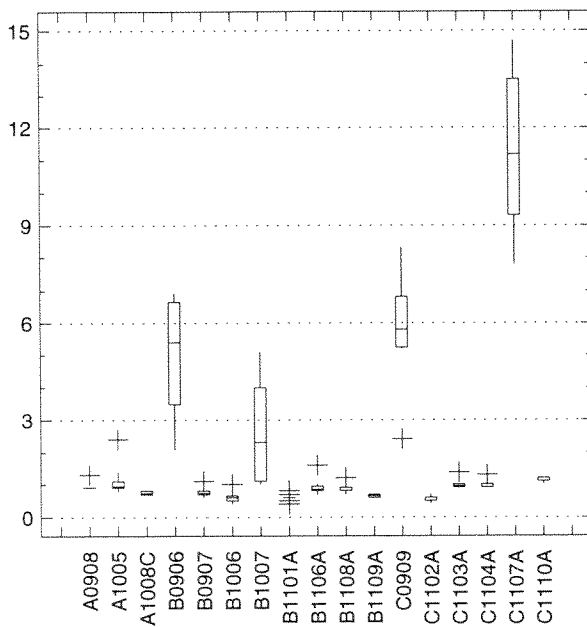


Figure 3-37. Total Organic Carbon (mg/L) in Groundwater Samples from the Weathered Lavery Till Unit

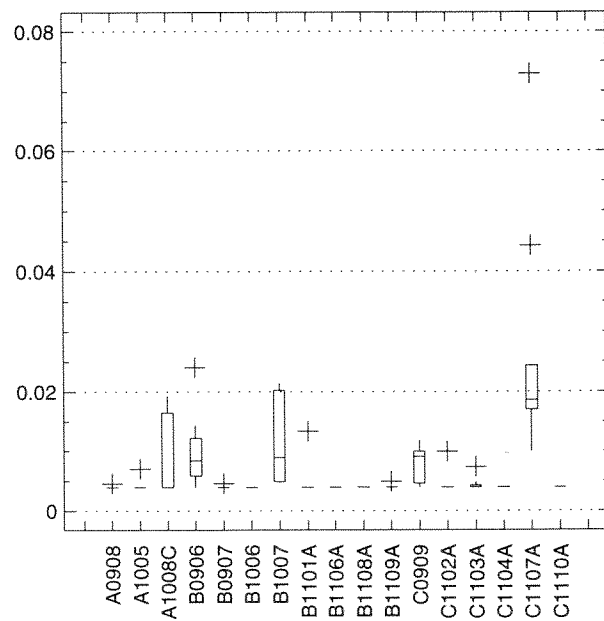


Figure 3-38. Total Organic Halogens (mg/L) in Groundwater Samples from the Weathered Lavery Till Unit

Wells are arranged in general upgradient to downgradient order, reading from left to right.

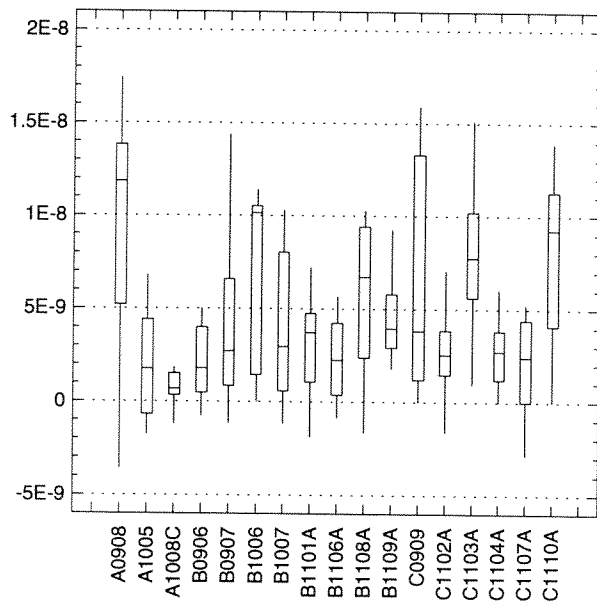


Figure 3-39. Gross Alpha ($\mu\text{Ci/mL}$) in Groundwater Samples from the Weathered Lavery Till Unit

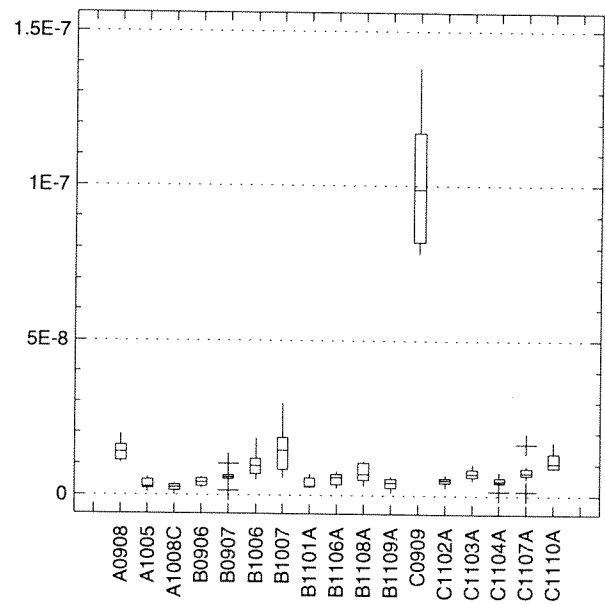


Figure 3-40. Gross Beta ($\mu\text{Ci/mL}$) in Groundwater Samples from the Weathered Lavery Till Unit

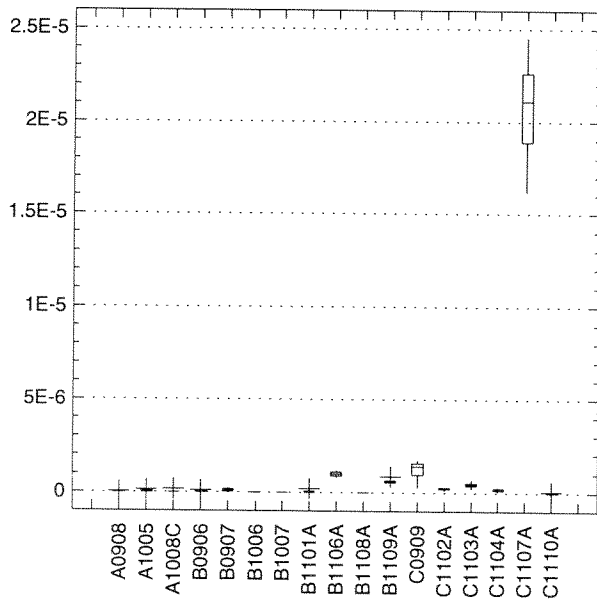


Figure 3-41. Tritium Activity ($\mu\text{Ci/mL}$) in Groundwater Samples from the Weathered Lavery Till Unit
Figure 3-41a follows with expanded scale

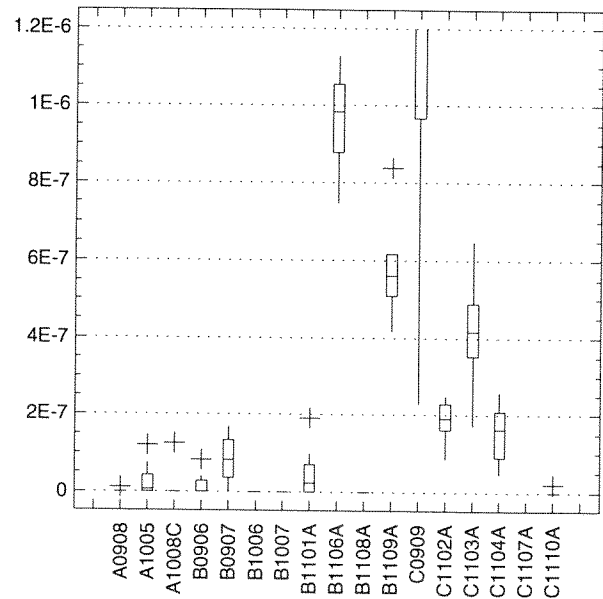


Figure 3-41a. Tritium Activity ($\mu\text{Ci/mL}$) in Groundwater Samples from the Weathered Lavery Till Unit (expanded scale)

Wells are arranged in general upgradient to downgradient order, reading from left to right.

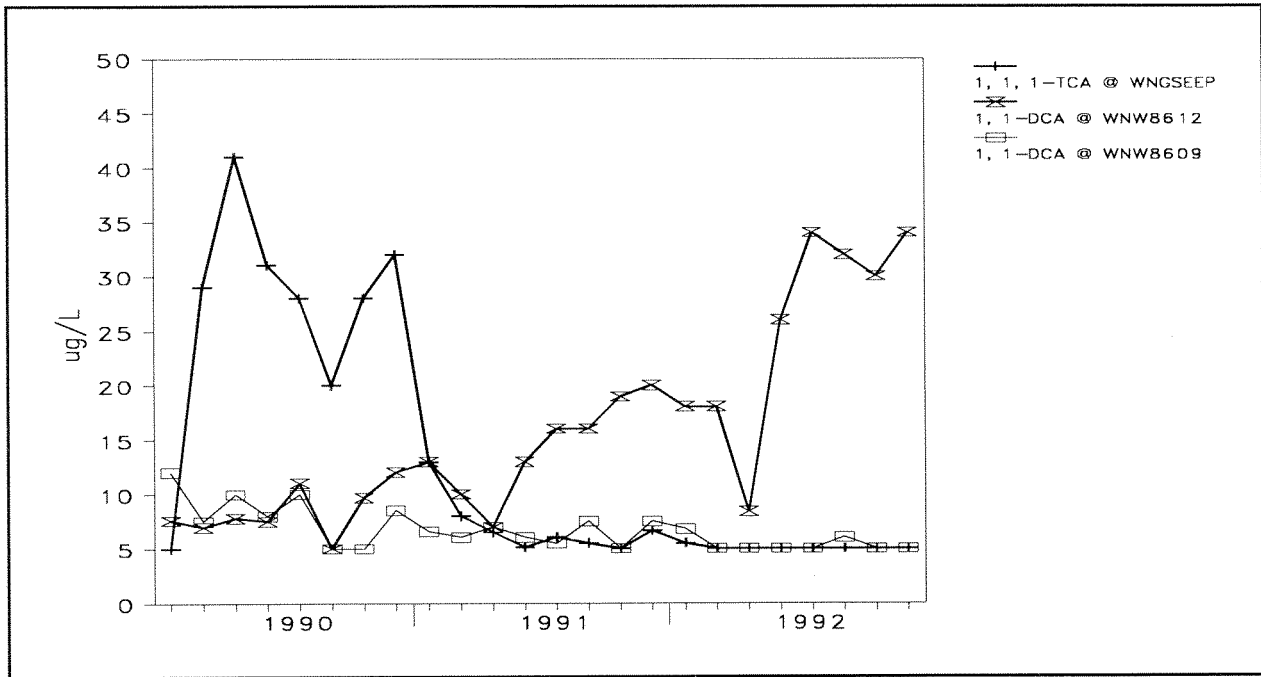


Figure 3-42. Three-Year Trends (1990 through 1992) of 1,1-DCA and 1,1,1-TCA ($\mu\text{g/L}$) at Selected Groundwater Locations

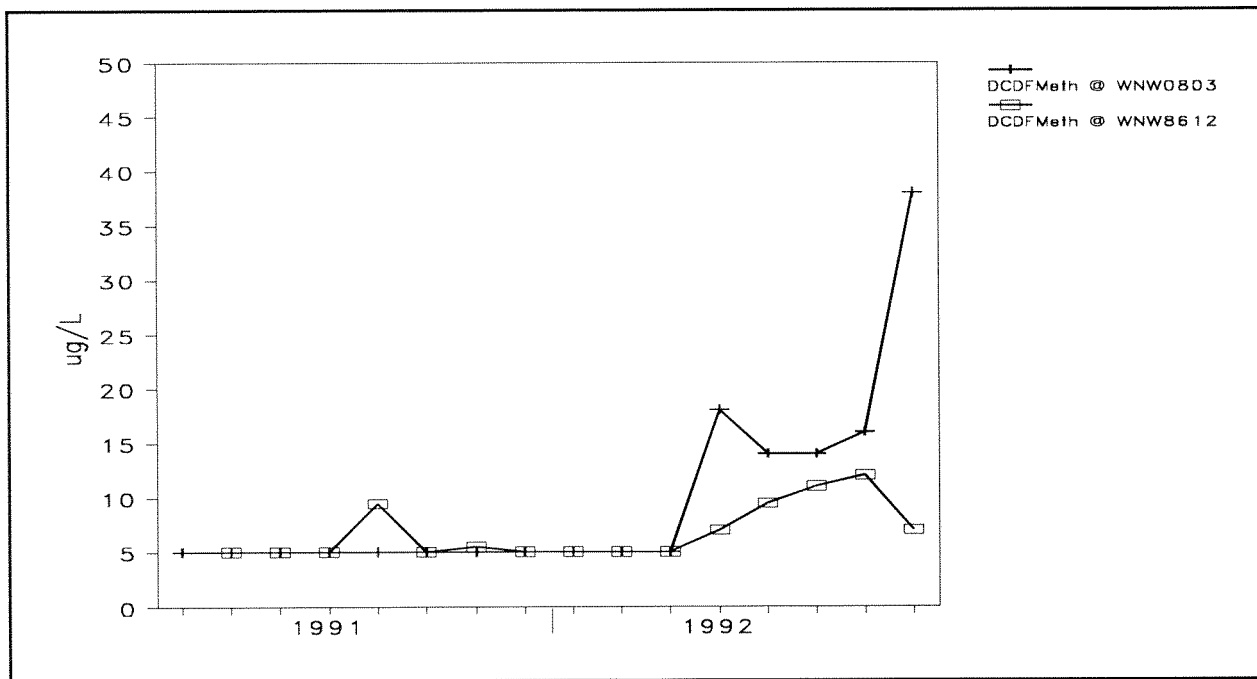


Figure 3-42a. Two-Year Trends (1991 through 1992) of Dichlorodifluoromethane (DCDFMeth) ($\mu\text{g/L}$) at Selected Groundwater Locations

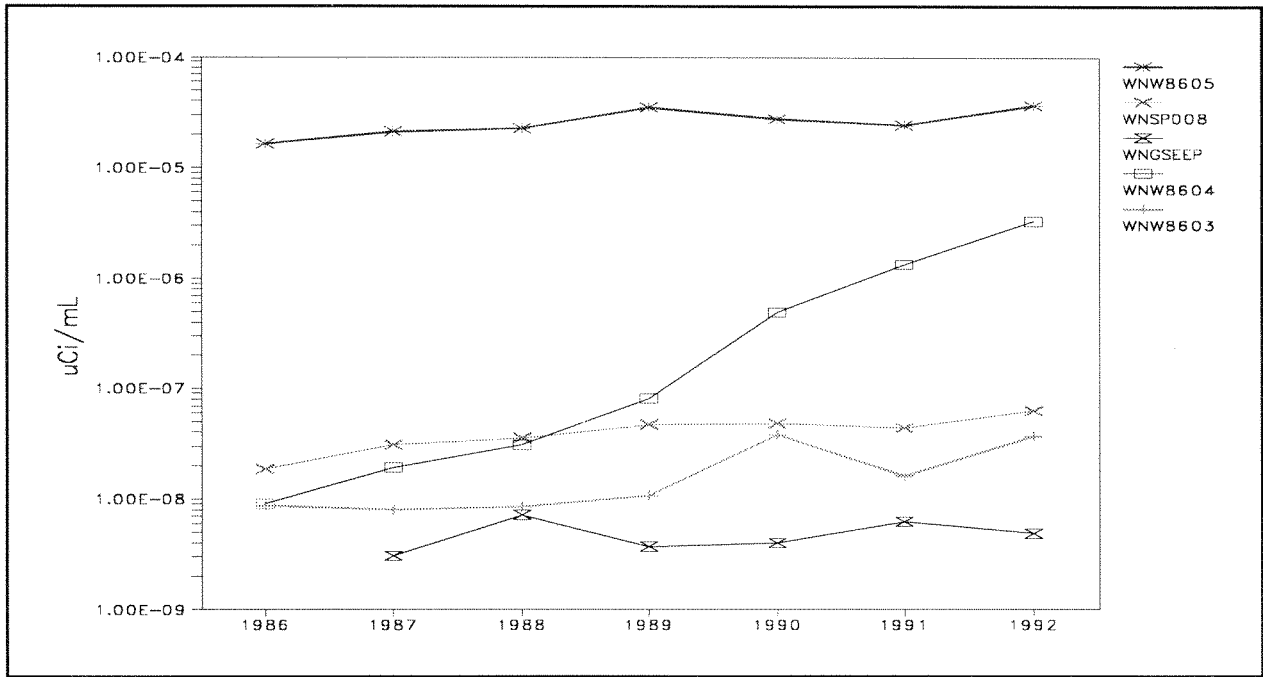


Figure 3-43. Seven-Year Trends of Averaged Gross Beta Activity (µCi/mL) at Selected Locations in the Sand and Gravel Unit

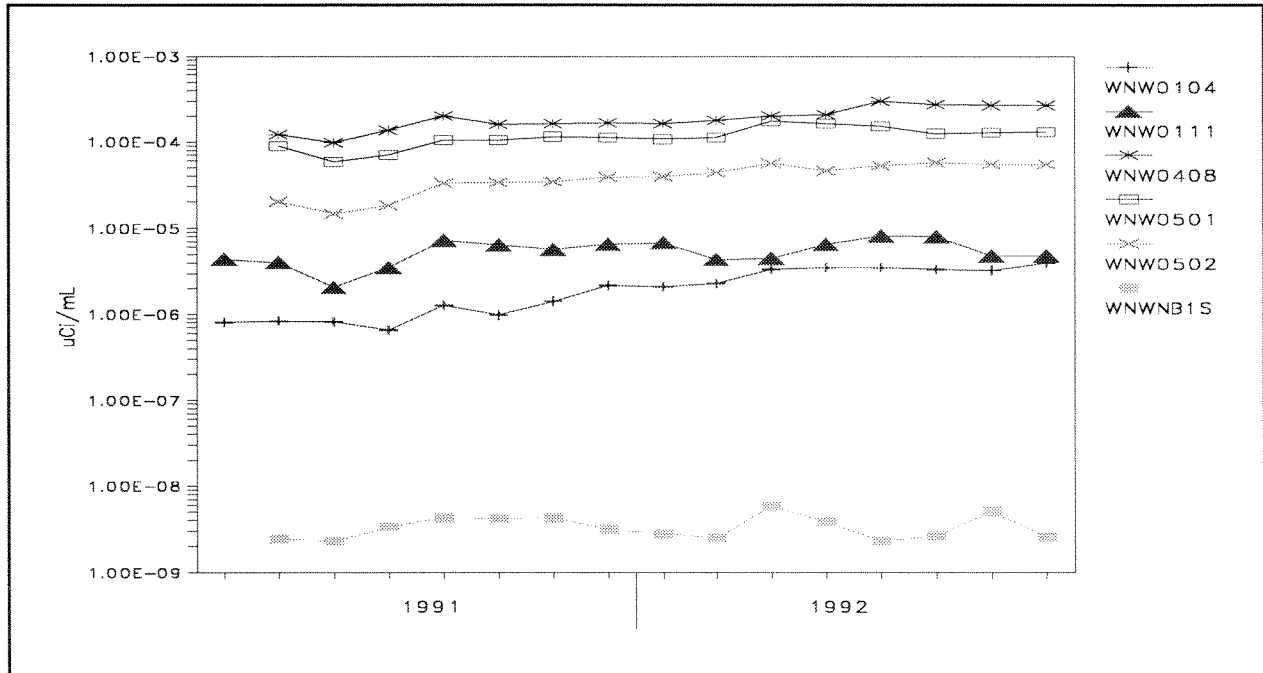


Figure 3-43a. Two-Year Trends of Gross Beta Activity (µCi/mL) for Selected New Wells

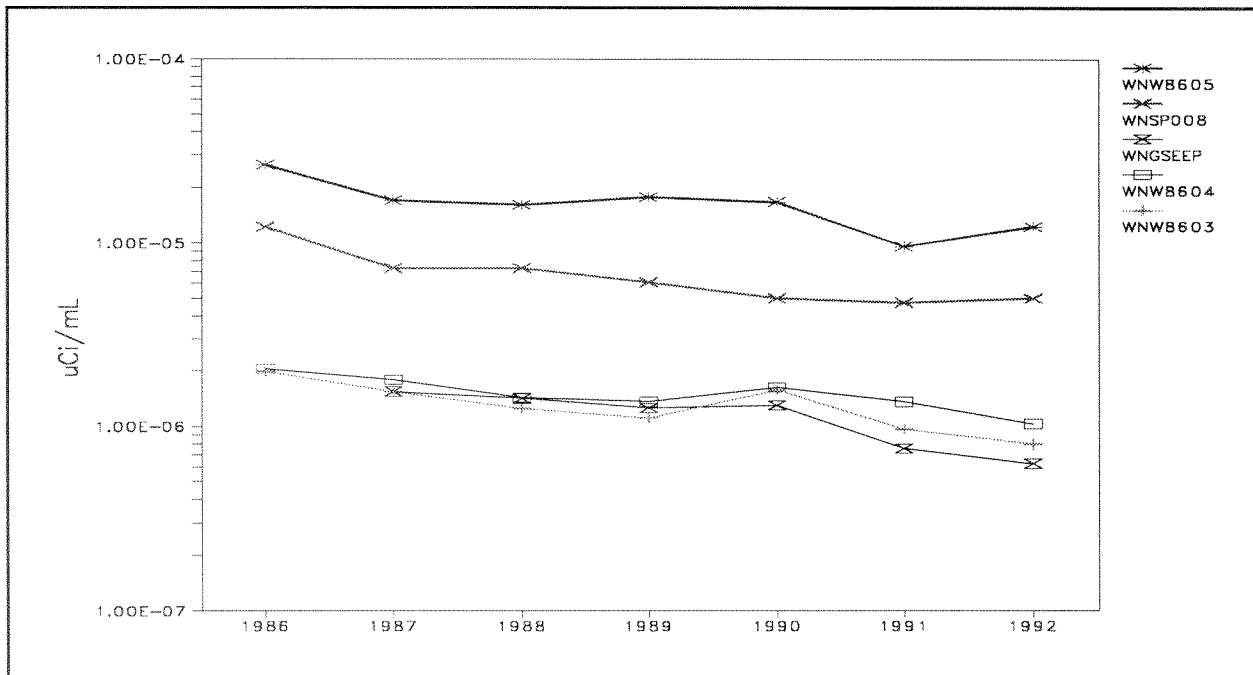


Figure 3-44. Seven-Year Trends of Averaged Tritium Activity (µCi/mL) at Selected Locations in the Sand and Gravel Unit

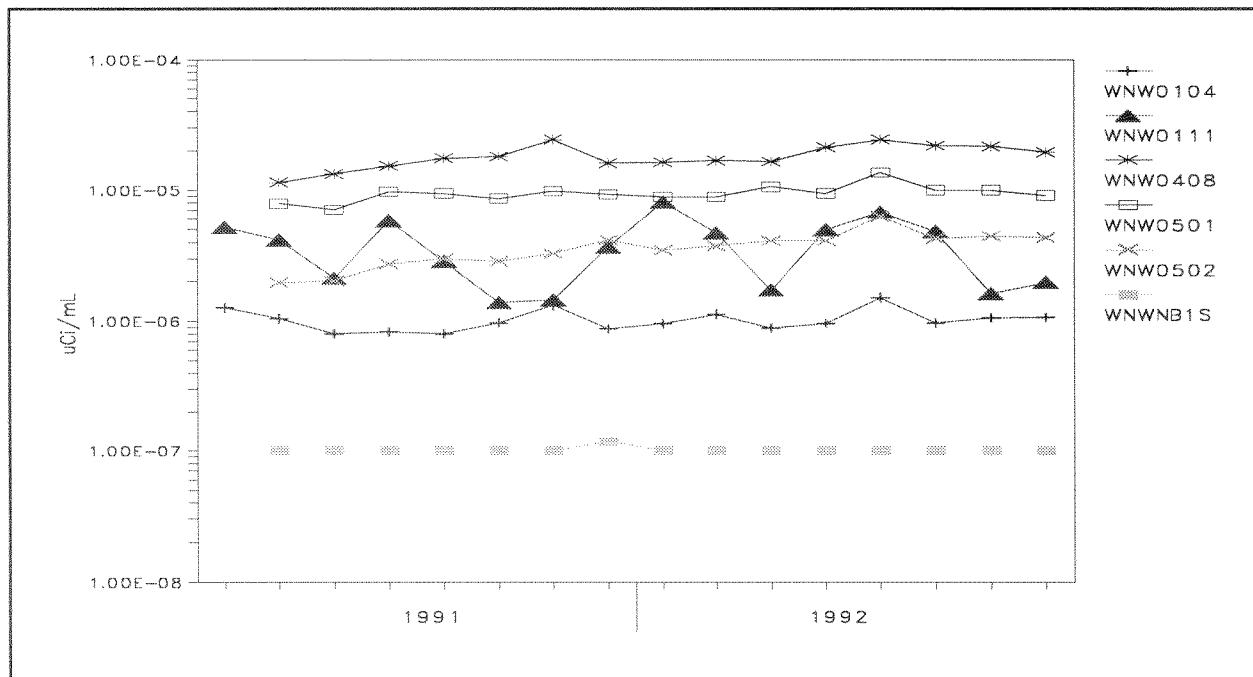


Figure 3-44a. Two-Year Trends of Tritium Activity (µCi/mL) for Selected New Wells