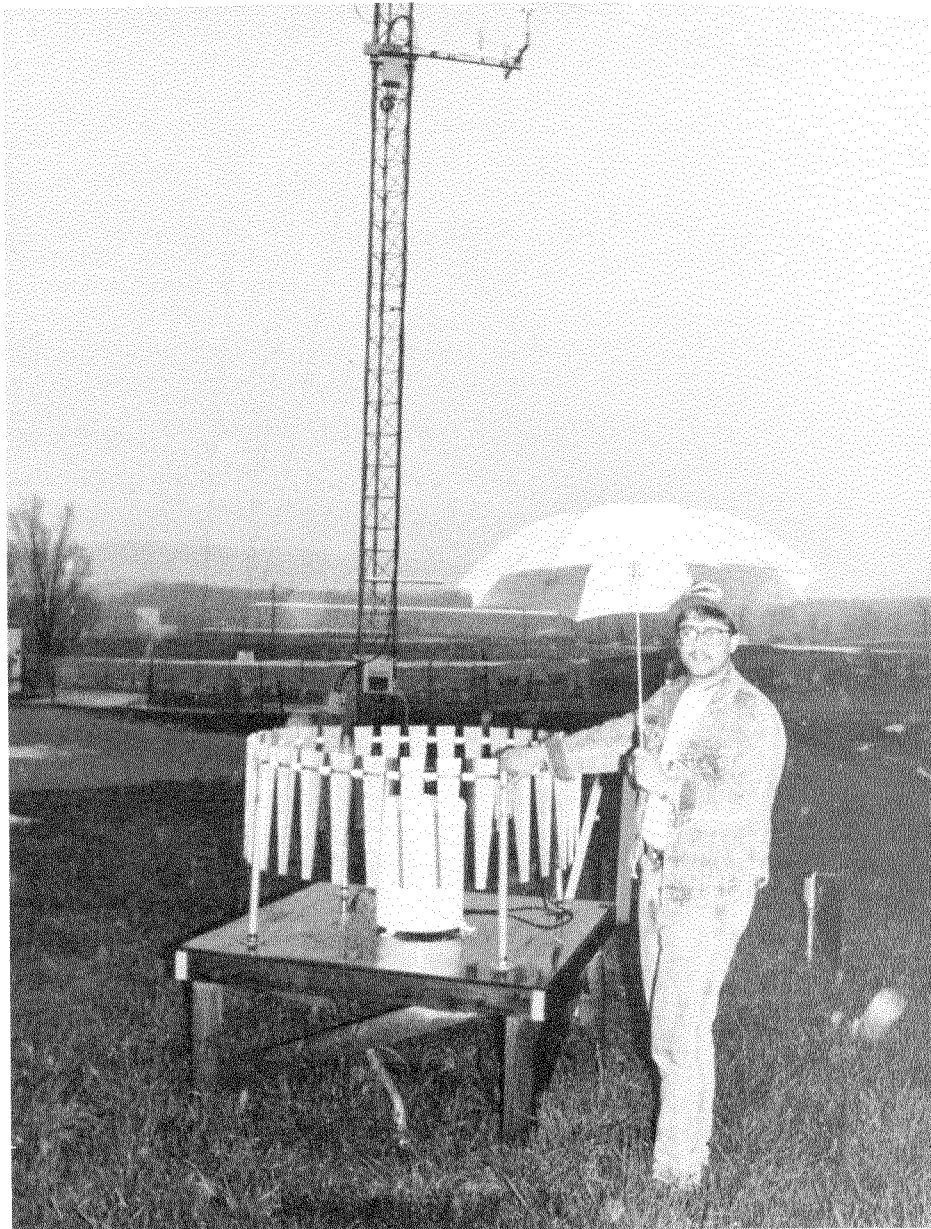
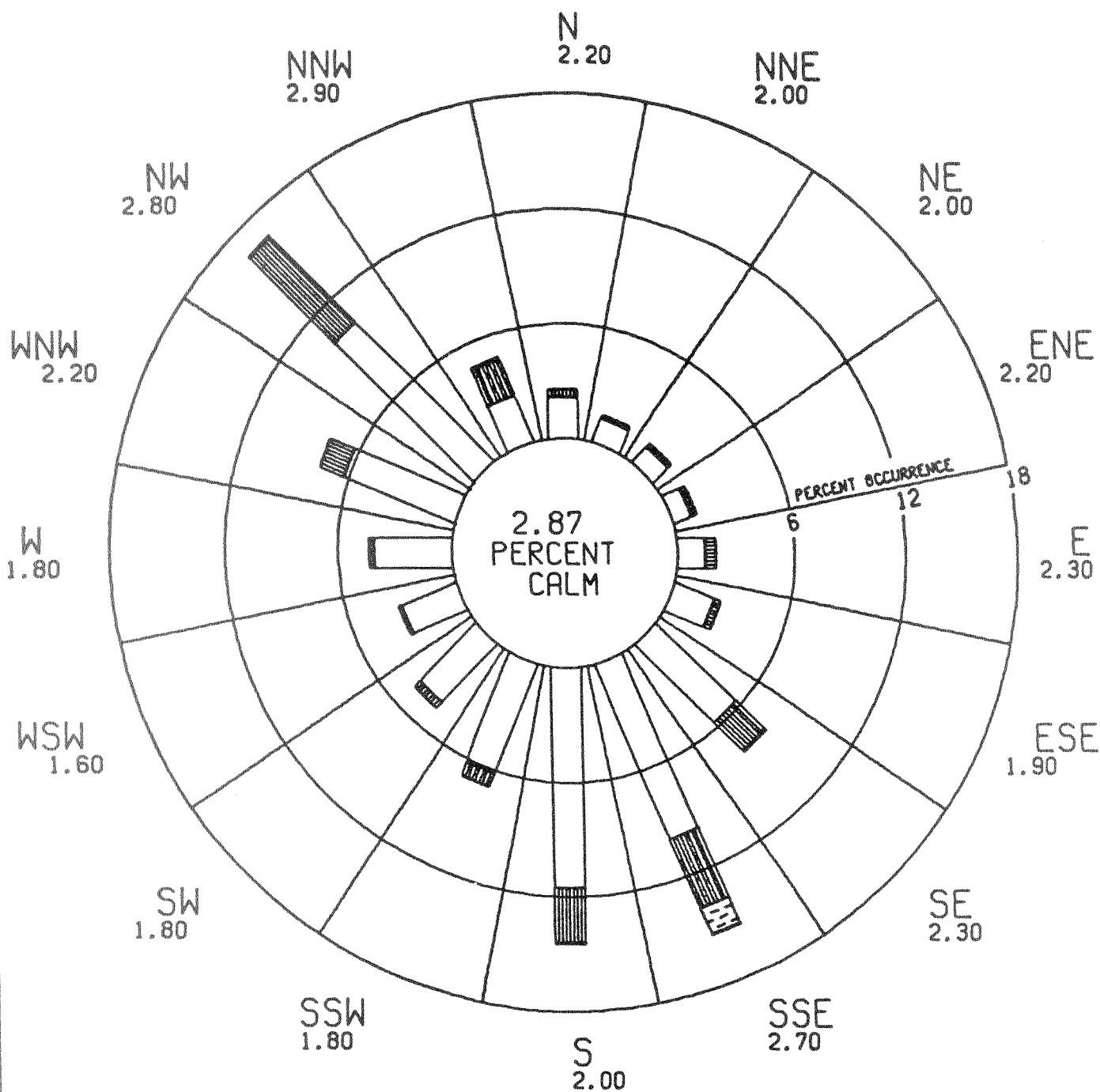


Appendix C - 6

Summary of Meteorological Data



On-site Meteorological Tower and Rain Gauge



NUMBERS INDICATE SECTOR MEAN WIND SPEED
SECTORS ARE DIRECTIONS FROM WHICH THE WIND IS BLOWING

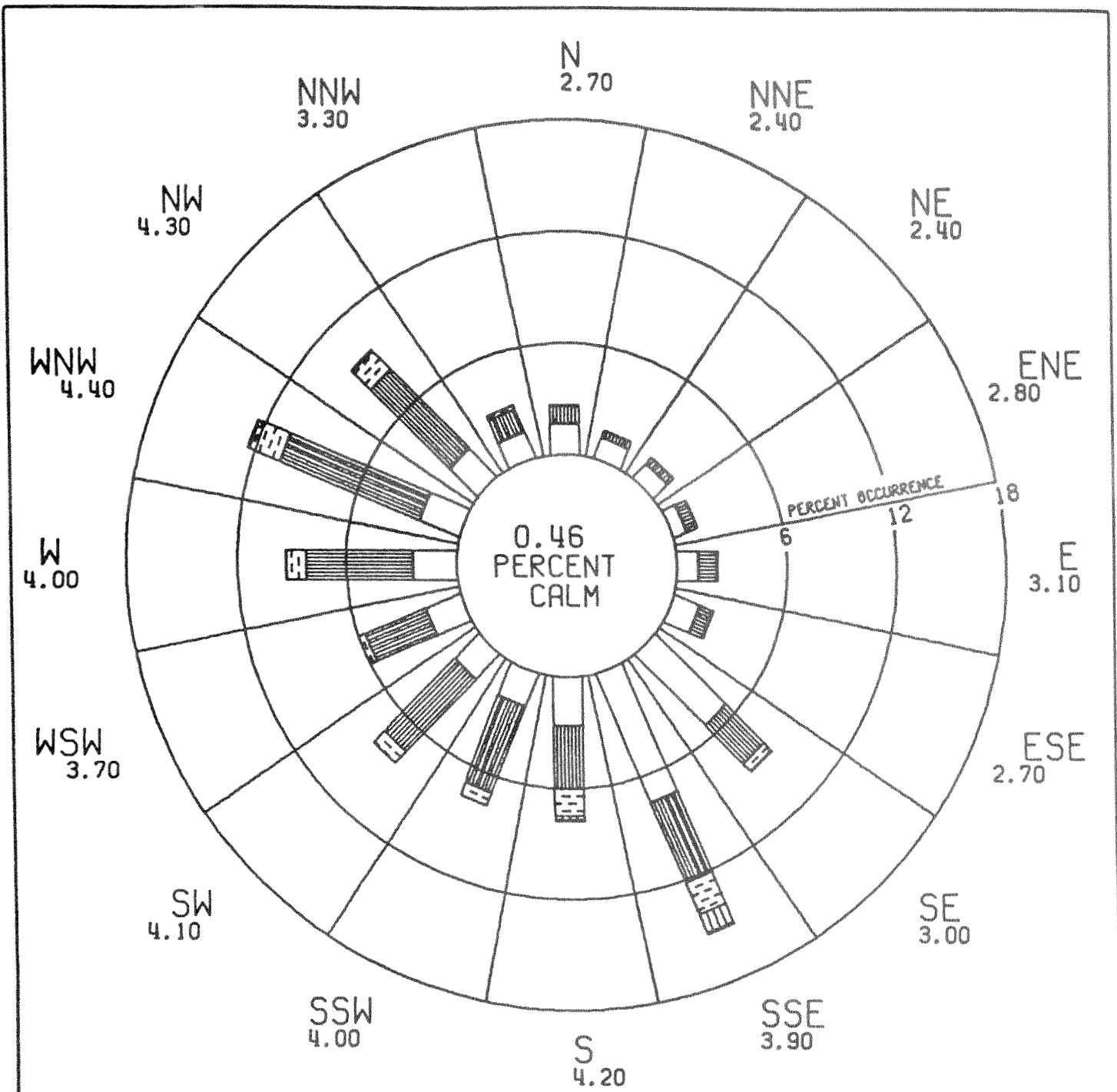
WIND SPEED RANGE

- | | | |
|--|------------|-------|
| | 0.5 - 3 | M/SEC |
| | > 3 - 6 | |
| | > 6 - 9 | |
| | > 9 - 12 | |
| | > 12 | |
| | CALM < 0.5 | |

WEST VALLEY NUCLEAR SERVICES
PRIMARY MONITORING STATION
WEST VALLEY, NEW YORK

Figure C-6.1

10.0-METER WIND FREQUENCY ROSE
JANUARY 1, 1995 - DECEMBER 31, 1995

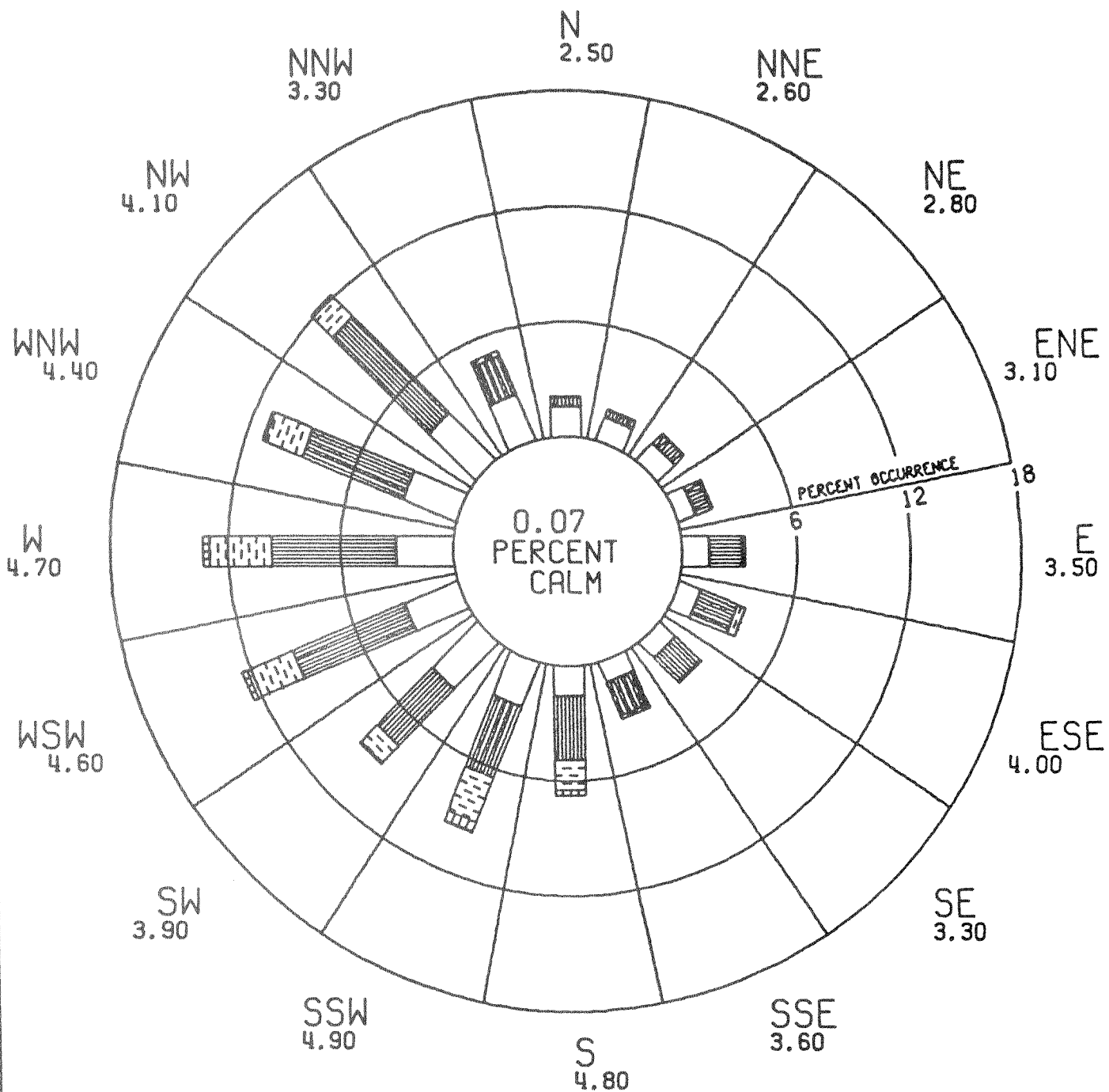


NUMBERS INDICATE SECTOR MEAN WIND SPEED
SECTORS ARE DIRECTIONS FROM WHICH THE WIND IS BLOWING

- WIND SPEED RANGE
- 0.5 - 3 M/SEC
 - > 3 - 6
 - > 6 - 9
 - > 9 - 12
 - > 12
 - CALM < 0.5

WEST VALLEY NUCLEAR SERVICES
PRIMARY MONITORING STATION
WEST VALLEY, NEW YORK

Figure C-6.2
60.0-METER WIND FREQUENCY ROSE
JANUARY 1, 1995 - DECEMBER 31, 1995



NUMBERS INDICATE SECTOR MEAN WIND SPEED
SECTORS ARE DIRECTIONS FROM WHICH THE WIND IS BLOWING

WIND SPEED RANGE

- | | | |
|---|------------|-------|
| □ | 0.5 - 3 | M/SEC |
| ▨ | > 3 - 6 | |
| ▩ | > 6 - 9 | |
| ▪ | > 9 - 12 | |
| ▫ | > 12 | |
| | CALM < 0.5 | |

WEST VALLEY NUCLEAR SERVICES
REGIONAL MONITORING STATION
WEST VALLEY, NEW YORK

Figure C-6.3

10.0-METER WIND FREQUENCY ROSE
JANUARY 1, 1995 - DECEMBER 31, 1995

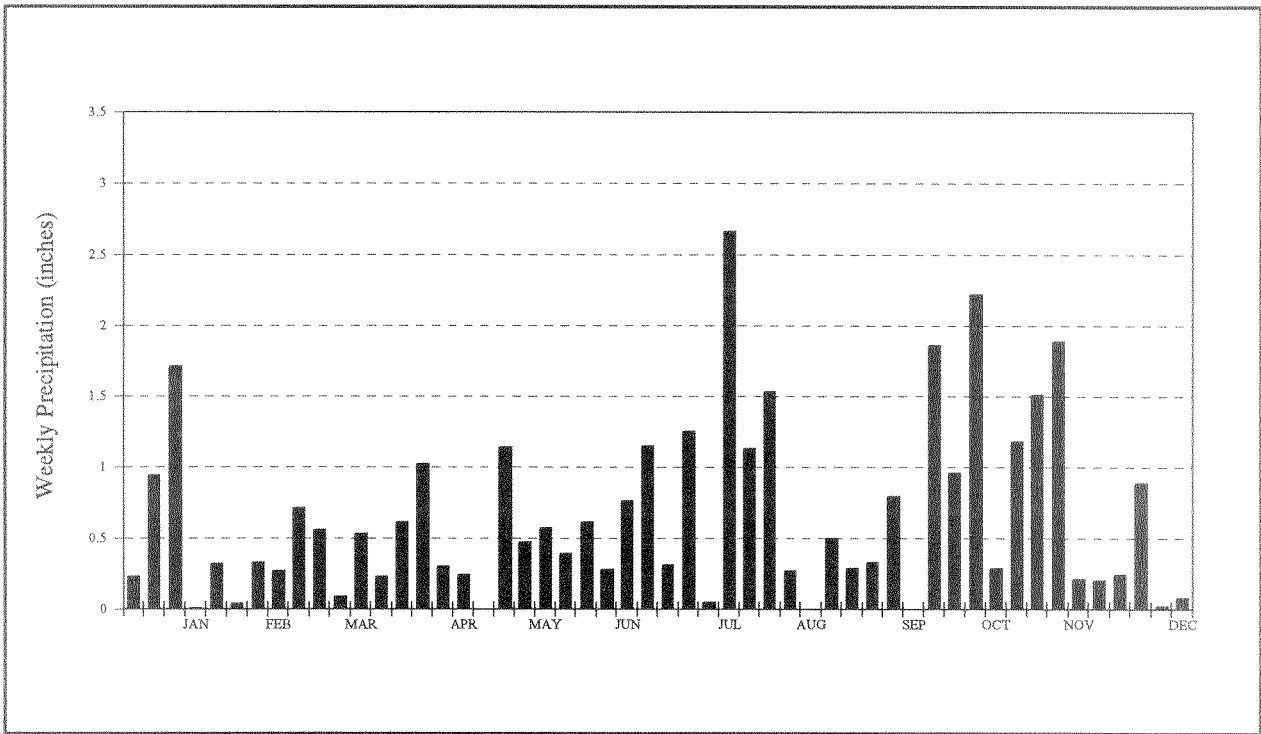


Figure C - 6.4. 1995 Weekly Precipitation

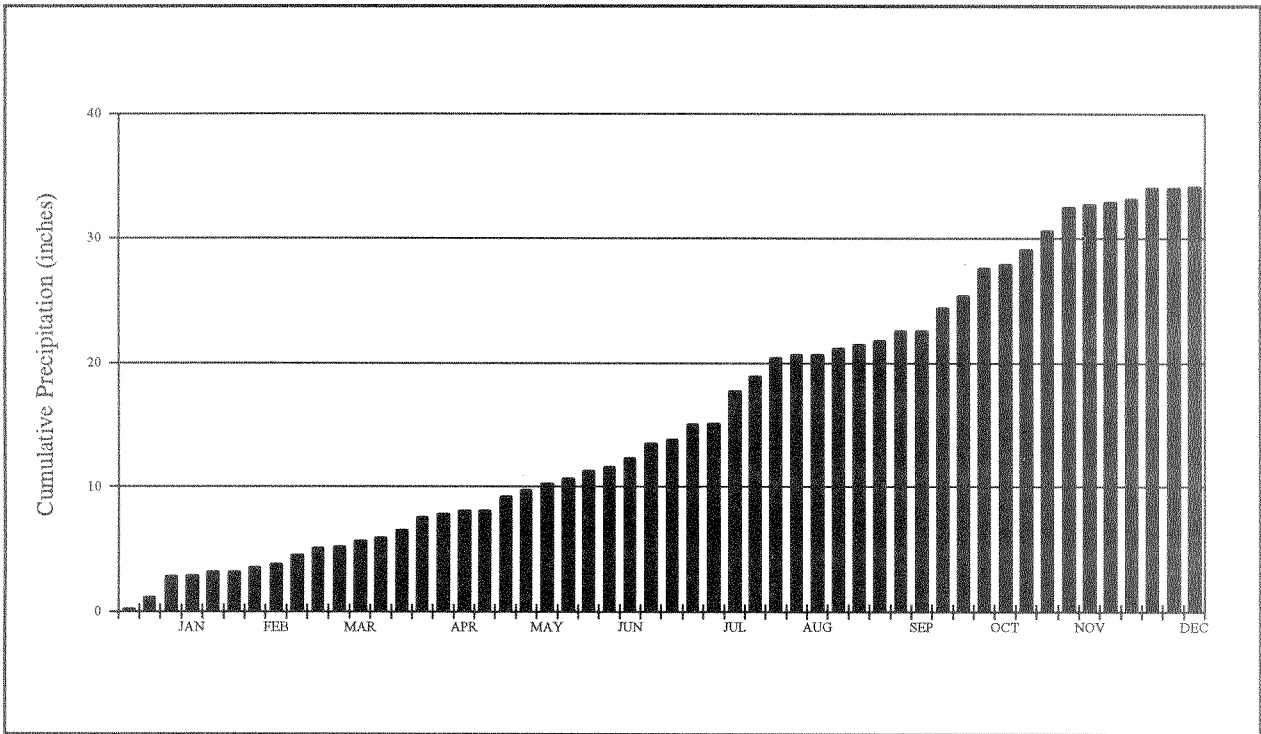


Figure C - 6.5. 1995 Cumulative Precipitation

Table C - 6.1
1995 Site Precipitation Collection Data

Week Ending	Weekly (inches)	Cumulative (inches)	Week Ending	Weekly (inches)	Cumulative (inches)
<i>January 7</i>	0.23	0.23	<i>July 8</i>	0.31	13.82
<i>January 14</i>	0.94	1.17	<i>July 15</i>	1.25	15.07
<i>January 21</i>	1.71	2.88	<i>July 22</i>	0.05	15.12
<i>January 28</i>	0.01	2.89	<i>July 29</i>	2.66	17.78
<i>February 4</i>	0.32	3.21	<i>August 5</i>	1.13	18.91
<i>February 11</i>	0.04	3.25	<i>August 12</i>	1.53	20.44
<i>February 18</i>	0.33	3.58	<i>August 19</i>	0.27	20.71
<i>February 25</i>	0.27	3.85	<i>August 26</i>	0.00	20.71
<i>March 4</i>	0.71	4.56	<i>September 2</i>	0.50	21.21
<i>March 11</i>	0.56	5.12	<i>September 9</i>	0.29	21.50
<i>March 18</i>	0.09	5.21	<i>September 16</i>	0.33	21.83
<i>March 25</i>	0.53	5.74	<i>September 23</i>	0.79	22.62
<i>April 1</i>	0.23	5.97	<i>September 30</i>	0.00	22.62
<i>April 8</i>	0.61	6.58	<i>October 7</i>	1.86	24.48
<i>April 15</i>	1.02	7.60	<i>October 14</i>	0.96	25.44
<i>April 22</i>	0.30	7.90	<i>October 21</i>	2.22	27.66
<i>April 29</i>	0.24	8.14	<i>October 28</i>	0.29	27.95
<i>May 6</i>	0.00	8.14	<i>November 4</i>	1.18	29.13
<i>May 13</i>	1.14	9.28	<i>November 11</i>	1.51	30.64
<i>May 20</i>	0.47	9.75	<i>November 18</i>	1.89	32.53
<i>May 27</i>	0.57	10.32	<i>November 25</i>	0.21	32.74
<i>June 3</i>	0.39	10.71	<i>December 2</i>	0.20	32.94
<i>June 10</i>	0.61	11.32	<i>December 9</i>	0.24	33.18
<i>June 17</i>	0.28	11.60	<i>December 16</i>	0.89	34.07
<i>June 24</i>	0.76	12.36	<i>December 23</i>	0.02	34.09
<i>July 1</i>	1.15	13.51	<i>December 31</i>	0.08	34.17

Table C - 6.2

1995 Annual Temperature Summary at the 10-meter Primary Meteorological Tower

Month	Average Temperature		Maximum Temperature		Minimum Temperature	
	°C	°F	°C	°F	°C	°F
<i>January</i>	-1.6	29.1	17.8	64.0	-17.1	1.2
<i>February</i>	-6.0	21.2	9.7	49.5	-21.0	-5.8
<i>March</i>	2.0	35.6	18.7	65.7	-17.7	0.1
<i>April</i>	4.7	40.5	22.2	72.0	-10.0	14.0
<i>May</i>	12.8	55.0	24.9	76.8	-0.8	30.6
<i>June</i>	19.3	66.7	32.9	91.2	5.8	42.4
<i>July</i>	21.1	70.0	32.9	91.2	5.8	42.4
<i>August</i>	21.2	70.2	31.3	88.3	9.5	49.1
<i>September</i>	14.0	57.2	26.3	79.3	-0.3	31.5
<i>October</i>	11.7	53.1	25.1	77.2	-1.1	30.0
<i>November</i>	1.3	34.3	19.0	66.2	-9.5	14.9
<i>December</i>	-4.8	23.4	7.7	45.9	-16.1	3.0
Annual	8.1	46.6	32.9	91.2	-21.0	-5.8

Table C - 6.3
1995 Annual Barometric Pressure Summary
(station pressure)

Month	Barometric Pressure (inches of mercury)		
	Average Pressure	Maximum Pressure	Minimum Pressure
<i>January</i>	28.43	28.89	27.74
<i>February</i>	28.44	28.90	27.91
<i>March</i>	28.59	29.13	27.95
<i>April</i>	28.45	28.81	28.07
<i>May</i>	28.45	28.77	28.03
<i>June</i>	28.51	28.89	28.13
<i>July</i>	28.50	28.79	28.27
<i>August</i>	28.55	28.74	28.26
<i>September</i>	28.59	28.82	28.31
<i>October</i>	28.44	28.81	27.87
<i>November</i>	28.44	28.82	27.77
<i>December</i>	28.50	28.93	27.97
Annual	28.49	29.13	27.74