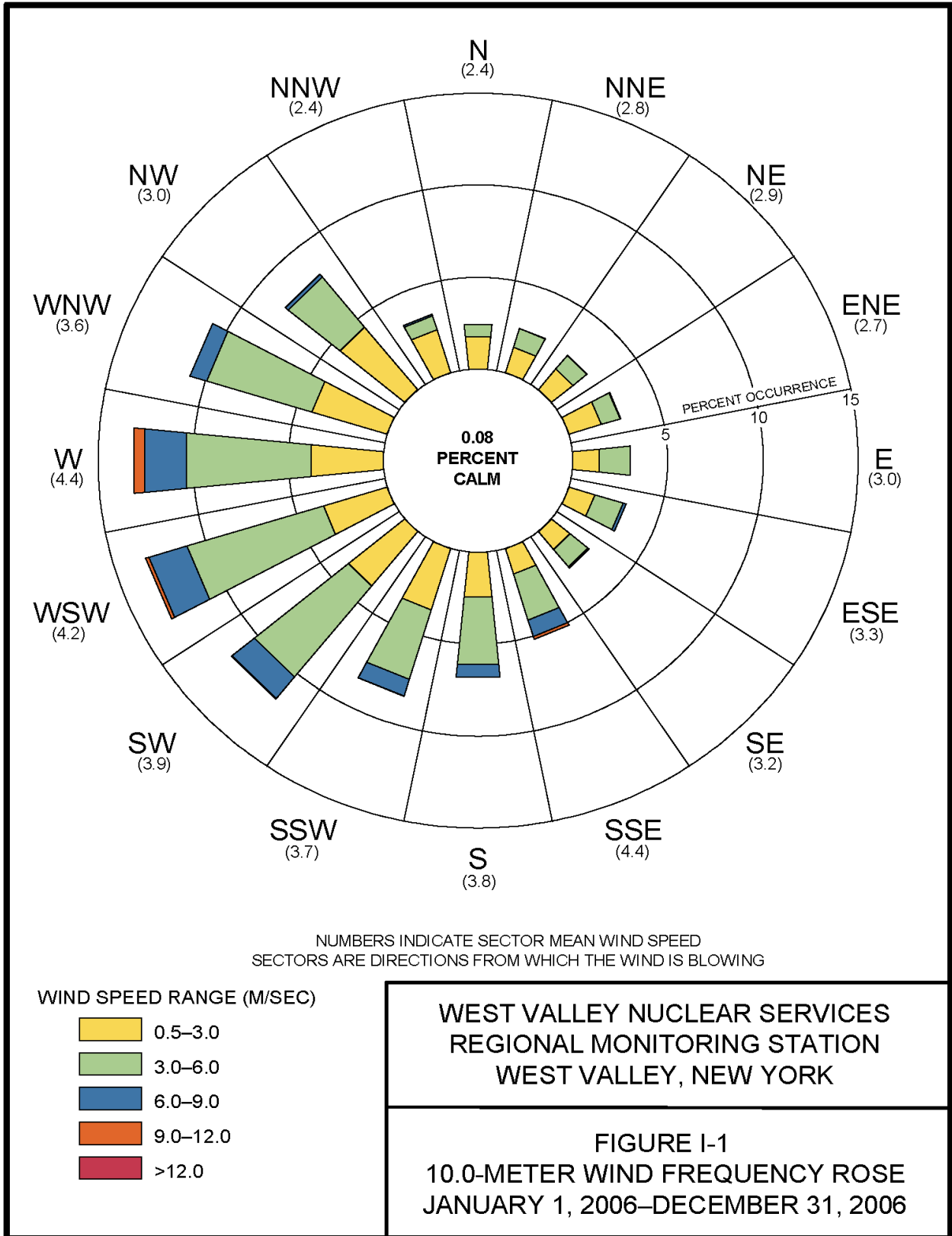
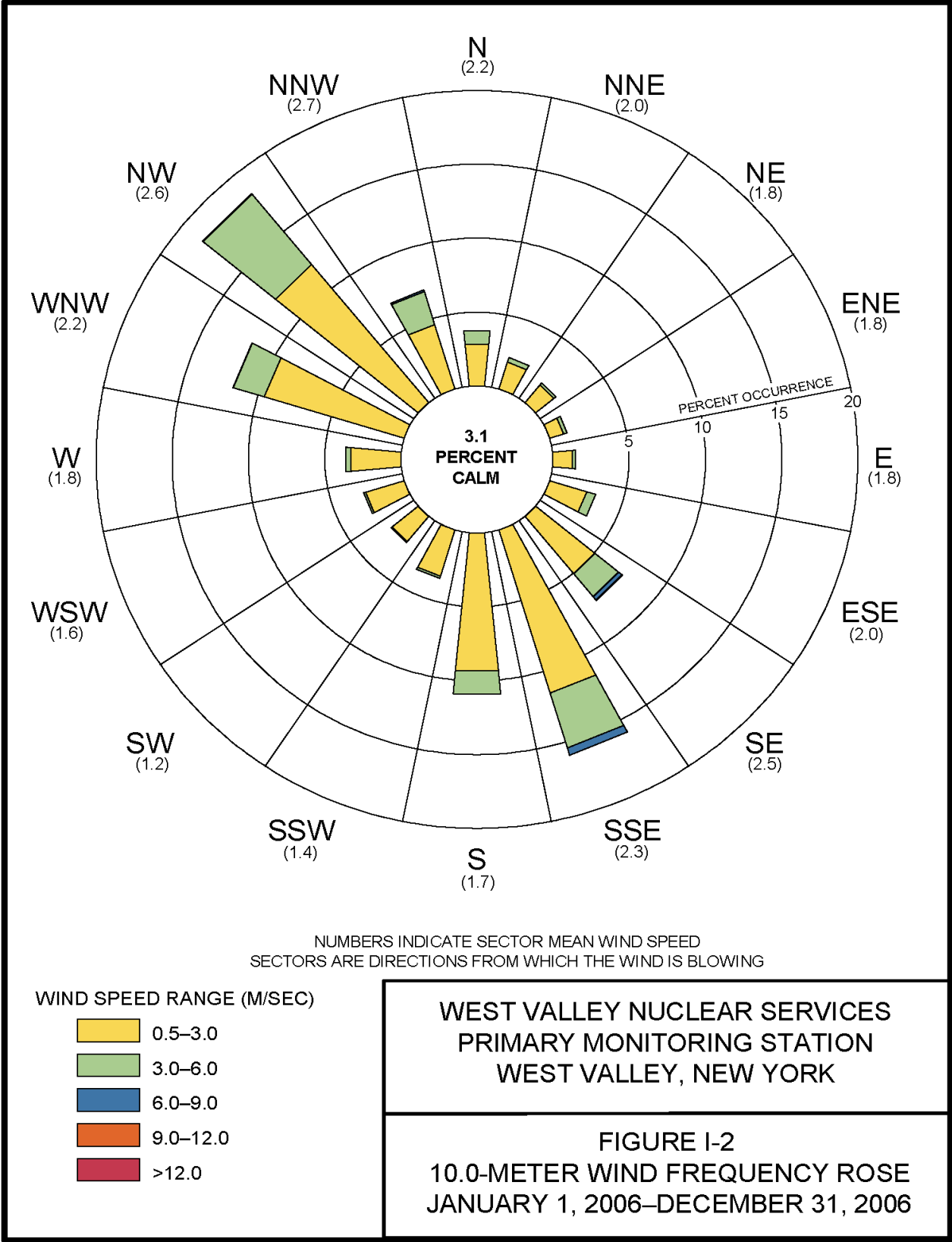


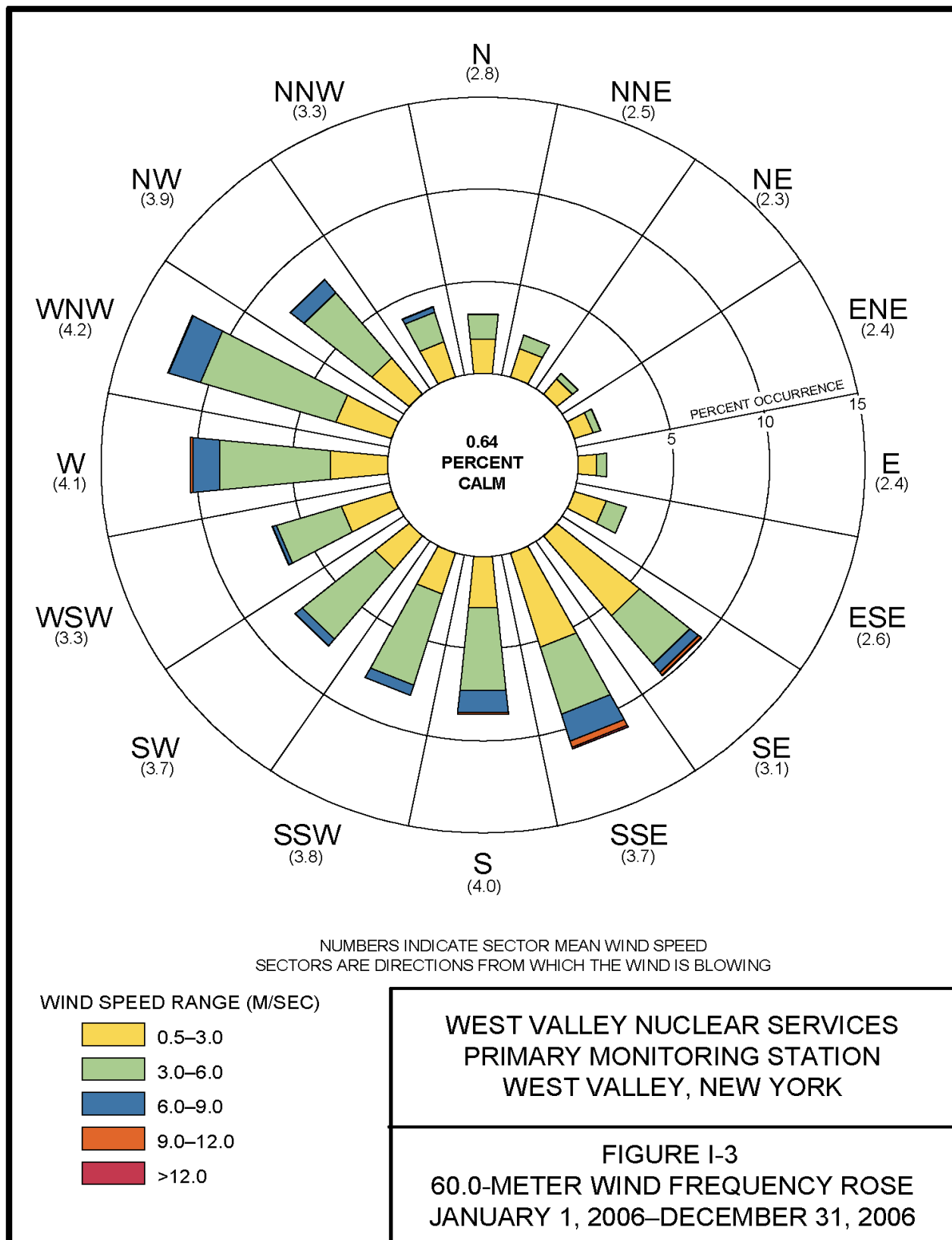
Appendix I

Summary of Meteorological Data

This page intentionally left blank







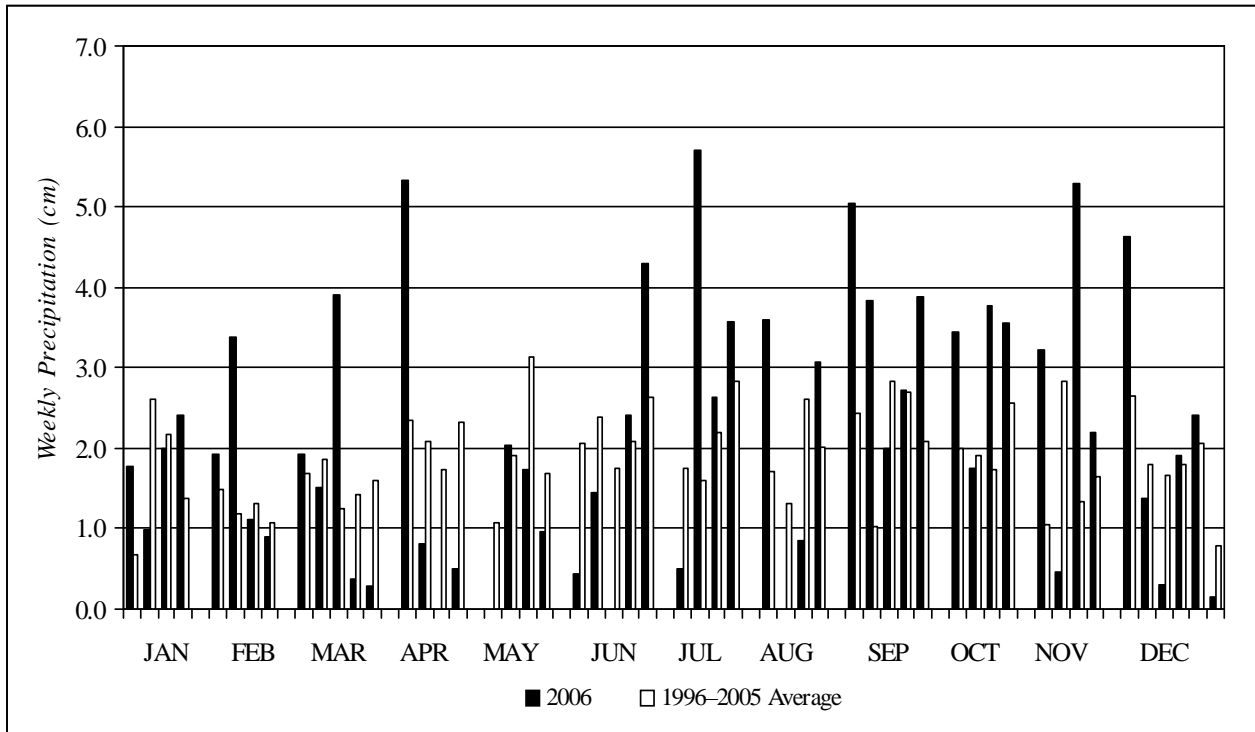


Figure I-4. Calendar Year 2006 Weekly Precipitation

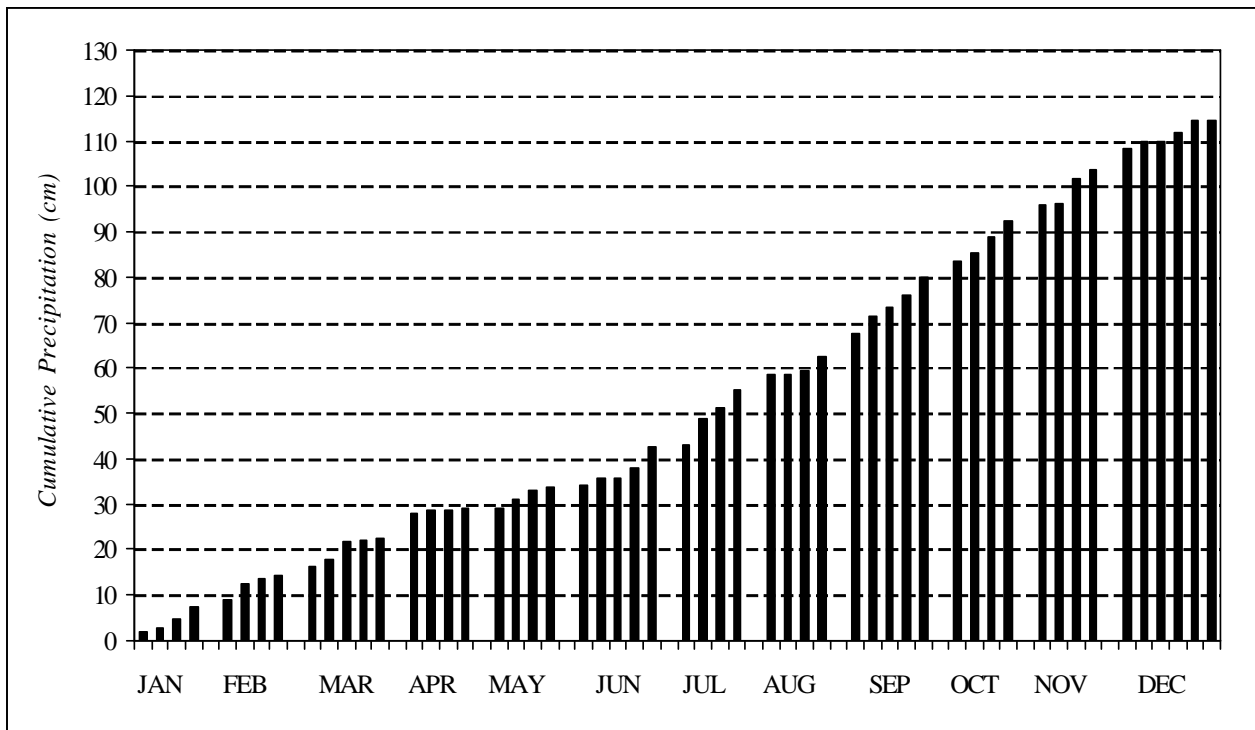


Figure I-5. Calendar Year 2006 Cumulative Precipitation

Table I-1
2006 Site Precipitation Collection Data

Week Ending:	Weekly		Cumulative		Week Ending:	Weekly		Cumulative	
	(cm)	(inches)	(cm)	(inches)		(cm)	(inches)	(cm)	(inches)
Jan 06	1.78	0.70	1.78	0.70	Jul 07	0.51	0.20	43.00	16.93
Jan 13	0.99	0.39	2.77	1.09	Jul 14	5.72	2.25	48.72	19.18
Jan 20	2.01	0.79	4.78	1.88	Jul 21	2.64	1.04	51.36	20.22
Jan 27	2.41	0.95	7.19	2.83	Jul 28	3.58	1.41	54.94	21.63
Feb 03	1.93	0.76	9.12	3.59	Aug 04	3.61	1.42	58.55	23.05
Feb 10	3.38	1.33	12.50	4.92	Aug 11	0.00	0.00	58.55	23.05
Feb 17	1.12	0.44	13.61	5.36	Aug 18	0.86	0.34	59.41	23.39
Feb 24	0.89	0.35	14.50	5.71	Aug 25	3.07	1.21	62.48	24.60
Mar 03	1.93	0.76	16.43	6.47	Sep 01	5.05	1.99	67.54	26.59
Mar 10	1.52	0.60	17.96	7.07	Sep 08	3.84	1.51	71.37	28.10
Mar 17	3.91	1.54	21.87	8.61	Sep 15	2.01	0.79	73.38	28.89
Mar 24	0.38	0.15	22.25	8.76	Sep 22	2.72	1.07	76.10	29.96
Mar 31	0.28	0.11	22.53	8.87	Sep 29	3.89	1.53	79.98	31.49
Apr 07	5.33	2.10	27.86	10.97	Oct 06	3.45	1.36	83.44	32.85
Apr 14	0.81	0.32	28.68	11.29	Oct 13	1.75	0.69	85.19	33.54
Apr 21	0.00	0.00	28.68	11.29	Oct 20	3.78	1.49	88.98	35.03
Apr 28	0.51	0.20	29.18	11.49	Oct 27	3.56	1.40	92.53	36.43
May 05	0.00	0.00	29.18	11.49	Nov 03	3.23	1.27	95.76	37.70
May 12	2.03	0.80	31.22	12.29	Nov 10	0.46	0.18	96.22	37.88
May 19	1.73	0.68	32.94	12.97	Nov 17	5.28	2.08	101.50	39.96
May 26	0.97	0.38	33.91	13.35	Nov 24	2.18	0.86	103.68	40.82
Jun 02	0.43	0.17	34.34	13.52	Dec 01	4.62	1.82	108.31	42.64
Jun 09	1.45	0.57	35.79	14.09	Dec 08	1.37	0.54	109.68	43.18
Jun 16	0.00	0.00	35.79	14.09	Dec 15	0.30	0.12	109.98	43.30
Jun 23	2.41	0.95	38.20	15.04	Dec 22	1.91	0.75	111.89	44.05
Jun 30	4.29	1.69	42.49	16.73	Dec 29	2.41	0.95	114.30	45.00
					Dec 31	0.15	0.06	114.45	45.06

This page intentionally left blank